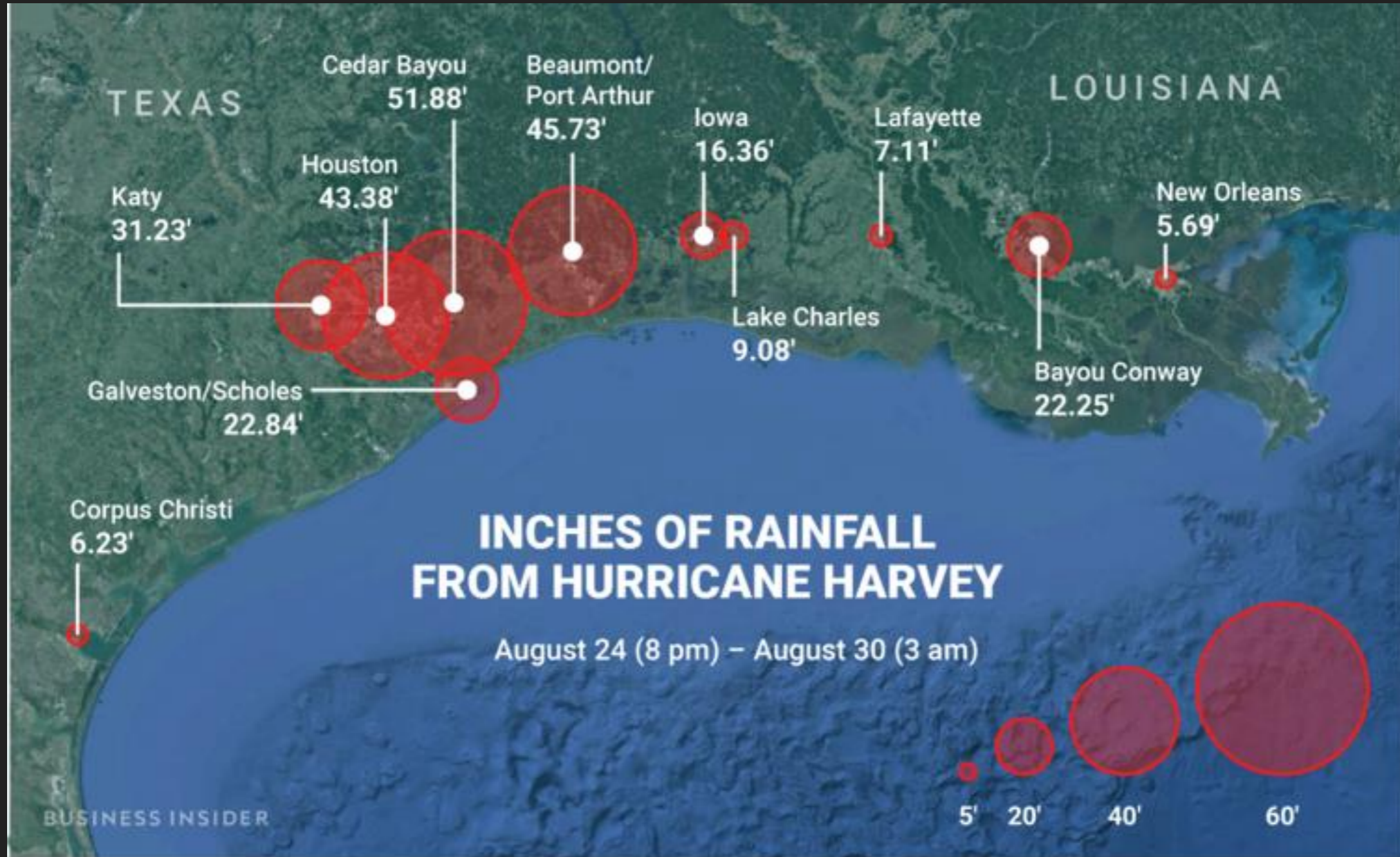




AUGUST 25-31, 2017

HURRICANE HARVEY

RAINFALL DURING HARVEY: TEXAS AND LOUISIANA



VARIOUS RESCUES/ DAMAGE

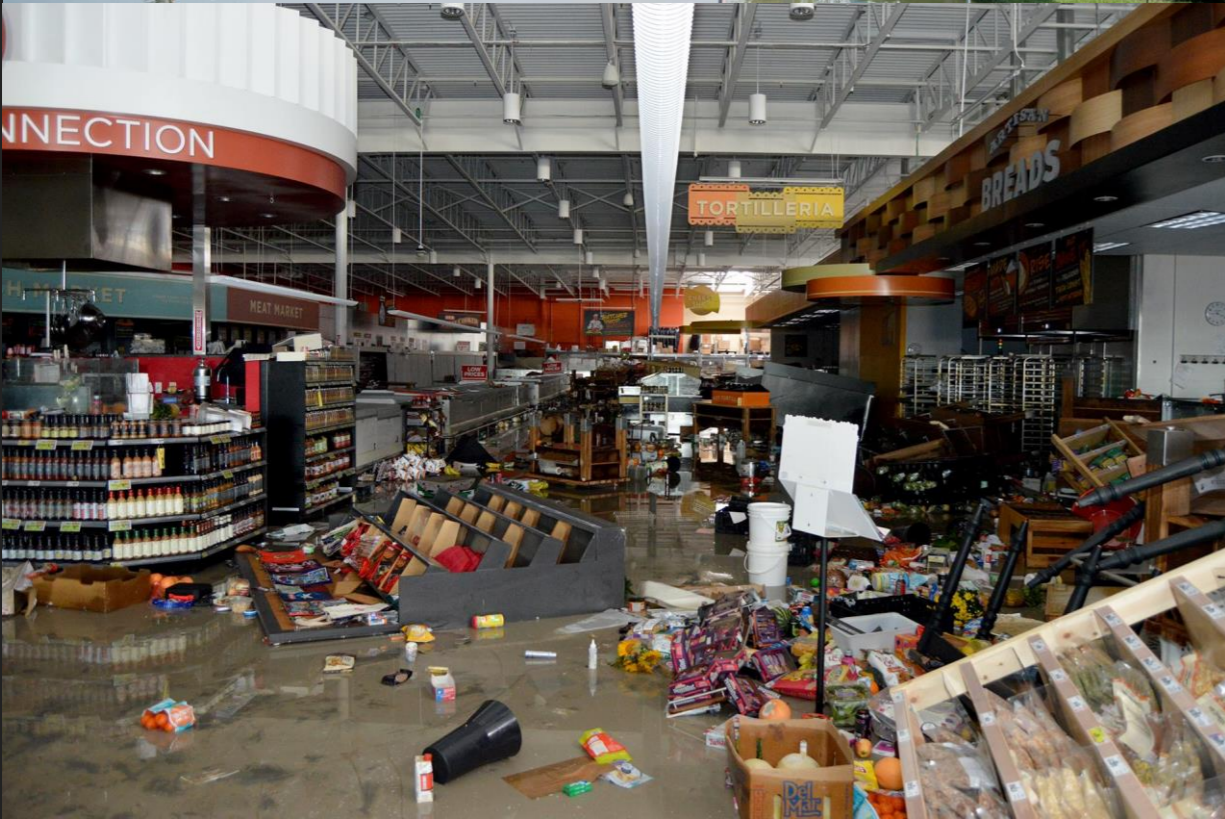


OVERALL DAMAGE TO THE AREA





BUSINESS DAMAGE



WAITING AND PREPARING

- ▶ Update COOP, OEP, and Cascade Plans
- ▶ Make contact with agency personnel, customers/partner agencies, lessors, contractors, subs, suppliers/vendors
- ▶ Acquisition planning and purchasing begins: including limited NTPs and purchasing of any needed supplies
- ▶ Begin discussions with Law Enforcement personnel - For us it is FPS, USMS CSOs and other law enforcement agencies
- ▶ Personnel supplies and inspection equipment
- ▶ Prepare and protect the facilities
- ▶ Remove environmental hazards

WHAT ARE WE PLANNING FOR—WELL, EVERYTHING, WORST CASE SCENARIO

- ▶ Extended electrical outages, impassable roadways, long periods of evacuation
- ▶ Need for cash money, necessary medical supplies, non-perishable food items, accommodations and supplies for animals, inability to do laundry
- ▶ Do you have staff on-site such as security guards who will be stationed at a building?
 - ▶ Do they have food?
 - ▶ Have alternate “facilities” been considered?
 - ▶ Do they understand their limitations, even during emergencies?

DURING THE STORM

- ▶ Gathering Information
- ▶ Monitoring your facilities remotely
- ▶ Acquisition planning continues
- ▶ Response teams are formed including SMEs - Environmental Officers, Engineers, Historical Preservation Managers
- ▶ Decisions made regarding first response, limiting access to your buildings

AFTER THE STORM

- ▶ Facility Assessments
- ▶ Status of agency conditions and operations
- ▶ Building and equipment inspections: HVAC, Life Safety and Security Systems
- ▶ Mold and Other Environmental Issues
- ▶ Loss of agency personal property
- ▶ Performing assessments in contaminated areas
- ▶ Personnel want their PERSONAL ITEMS
- ▶ Removal of contaminated material

AFTER THOUGHTS

- ▶ After the storm has passed, the media coverage has died and your buildings are operating again...
 - ▶ Shortage of reputable contractors and supplies
 - ▶ Delayed discovery
 - ▶ Replacing lost personal property
 - ▶ Patience and tempers are in short supply
 - ▶ Budgeting for capital improvements and preventive measures
- ▶ Contact info: Leenette Wilke -- Leenette.wilke@gsa.gov 832-397-8476