

DWSRF and Capacity Building in Action: Advancing Water Equity

April 7th, 2022



OFFICE OF GROUND WATER
AND DRINKING WATER

Welcome!



All attendees are in listen-only mode. Please do not unmute yourself during the presentation.



We will be recording this webinar. Please do not turn on your video during the presentation.



The recording and slides will be posted and a link emailed to all registered attendees 1-2 weeks after the webinar.

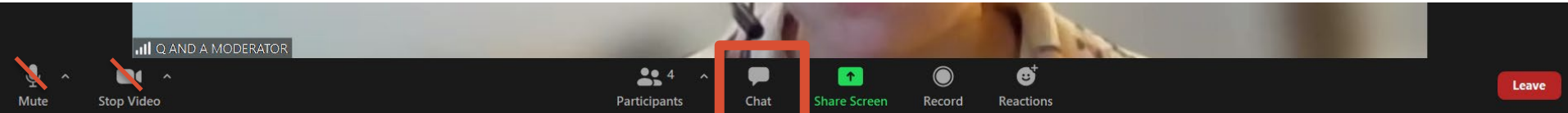


Check out <https://www.epa.gov/dwreginfo/drinking-water-training> for more drinking water webinars and trainings.



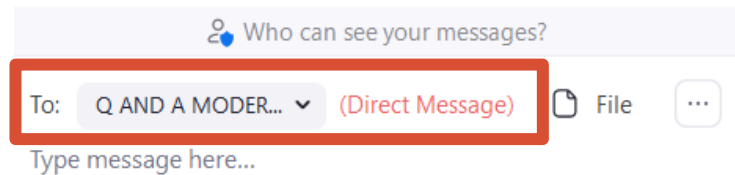
We encourage attendees to ask questions throughout the presentation by using the chat feature.

DIRECT YOUR QUESTIONS TO "Q AND A MODERATOR"



Chat box will pop up. Type in your questions at the bottom.

PLEASE DIRECT YOUR QUESTIONS TO "Q AND A MODERATOR"



PLEASE DIRECT TECHNICAL QUESTIONS TO "OGWDW Protection Training"

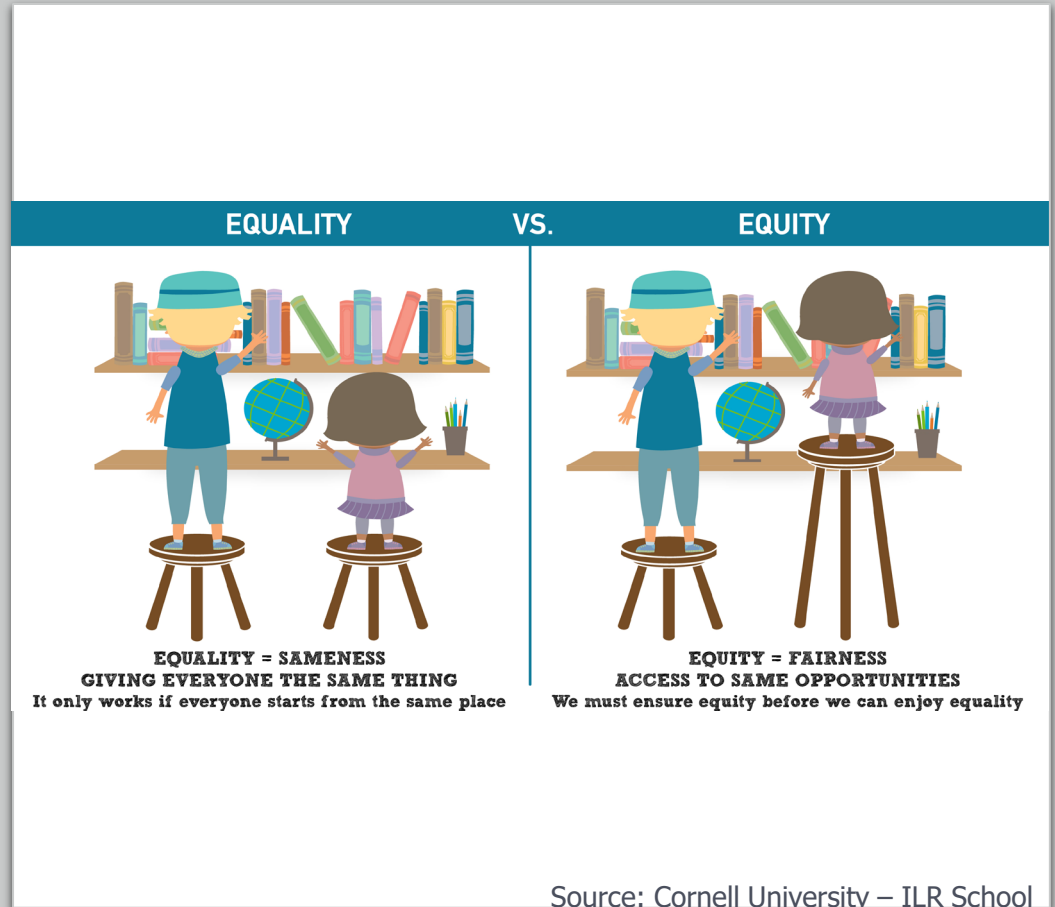
Learning Objectives

- Introduction to Water Equity and DWSRF Assistance
Dallas Shattuck, EPA HQ
- State Examples:
 - Tennessee's Strategic Initiatives for Small and Disadvantaged Systems
Vena Jones, Tennessee Department of Environmental Conservation
 - California's Technical Assistance Set-Asides funding Third-Party Organizations
James Garrett, California Water Boards
Eva Dominguez and Armando Murrieta, Self Help Enterprises
- Q&A at the end of the presentation.

Water Equity

Equity – Just and Fair Inclusion.

Water Equity – when **all** communities have access to safe, clean, affordable drinking water and wastewater services.



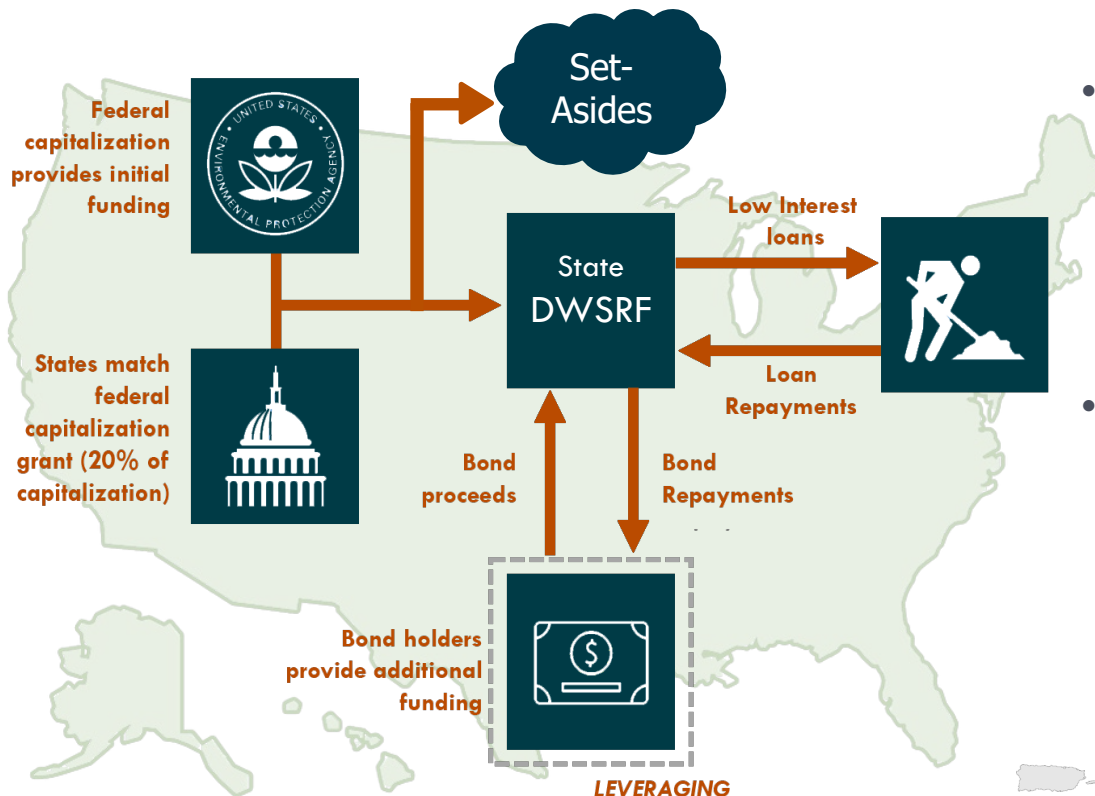
Source: Cornell University – ILR School

What is the DWSRF?



- **Public health protection program**
 - A federal/state partnership designed to create, in each state, a perpetual source of financing for drinking water infrastructure.
- **Has both infrastructure and non-infrastructure components**
 - Provides access to credit and permanent source of funding for water infrastructure (loan fund).
 - Provides non-infrastructure support to states and communities (set-asides).
 - Administrative (4%)
 - Small Systems Technical Assistance (2%)
 - State Program Management (10%)
 - Local Assistance (15%)

DWSRF Infrastructure Model



- 51 state-level “infrastructure banks” make loans with water systems for drinking water projects.
 - Water systems apply for funding with their respective state DWSRF program.
- States craft their DWSRF program to meet the needs of their state.
 - Each of the 51 programs are unique.
 - They operate within the federal framework but may target funding more narrowly.

How Does the DWSRF Assist Disadvantaged Communities?



- Household affordability is one of the DWSRF's statutory priorities.
- State DWSRF programs required to define "disadvantaged community" (DAC).
- Below-market interest rate loans
 - 1.1% avg. DWSRF interest rate vs. 2.2% market interest rate in 2021
- Additional subsidization (AKA "free" money)
 - 12-35% of each federal capitalization grant to DAC*
- Loan terms of up to 40 years (or design life, whichever is less)
- Technical assistance through the "set-asides"

Repayment and Savings Comparison of \$2 Million Loan

Interest rate	1.5%	2.5%	3.5%
Repayment for 20 Year Loan	\$2,316,218	\$2,543,534	\$2,783,807
Savings Using a 1.5% Rate	_____	\$227,316	\$467,589

**base program*

The Bipartisan Infrastructure Law



- Signed by President Biden on November 15, 2021.
- Historic investment in key programs and initiatives implemented by the U.S. Environmental Protection Agency to build safer, healthier, cleaner communities.
- Includes \$50 billion to the EPA to strengthen the nation’s drinking water and wastewater systems – the single largest investment in water that the federal government has ever made.
- More than \$30 billion of this funding through the DWSRF.
 - Some of this money may fund any project eligible under the DWSRF; some funding is targeted towards projects that address PFAS and “emerging contaminants;” some funding is targeted towards the identification and replacement of lead service lines.

Justice40



- The DWSRF is a “pilot program” under the Justice40 Initiative.
 - Sets a goal that 40 percent of the overall benefits of certain federal investments flow to disadvantaged communities (DACs).
- Over the past few months, the DWSRF worked on Justice40 engagement, implementation, and baseline metrics.
- Assistance to DACs is a high priority for the Agency.
- The new Bipartisan Infrastructure Law requires a significant portion of the funding be provided as additional subsidy to DACs.
 - This funding will be an important tool to further the goals of Justice40.

Resources



- [Addressing Water Affordability with the DWSRF](#) (fact sheet)
- [Implementation of the Clean Water and Drinking Water State Revolving Fund Provisions of the Bipartisan Infrastructure Law](#) (memorandum)
- [EPA Bipartisan Infrastructure Law](#) (website)
- [Justice40 OMB interim guidance](#)
- [National EJ Community Engagement Call: J40 and the SRFs](#) (Oct 26, 2021, webinar recording)

A dynamic background image showing a splash of clear water with numerous bubbles of various sizes rising from the surface. The water is bright blue and clear, with light reflecting off the bubbles and the surface.

RESOURCES

DWSRF Webpage: <https://www.epa.gov/dwsrf>

DWSRF Eligibility Handbook: <https://www.epa.gov/dwsrf/drinking-water-state-revolving-fund-eligibility-handbook>

Shattuck.Dallas@epa.gov



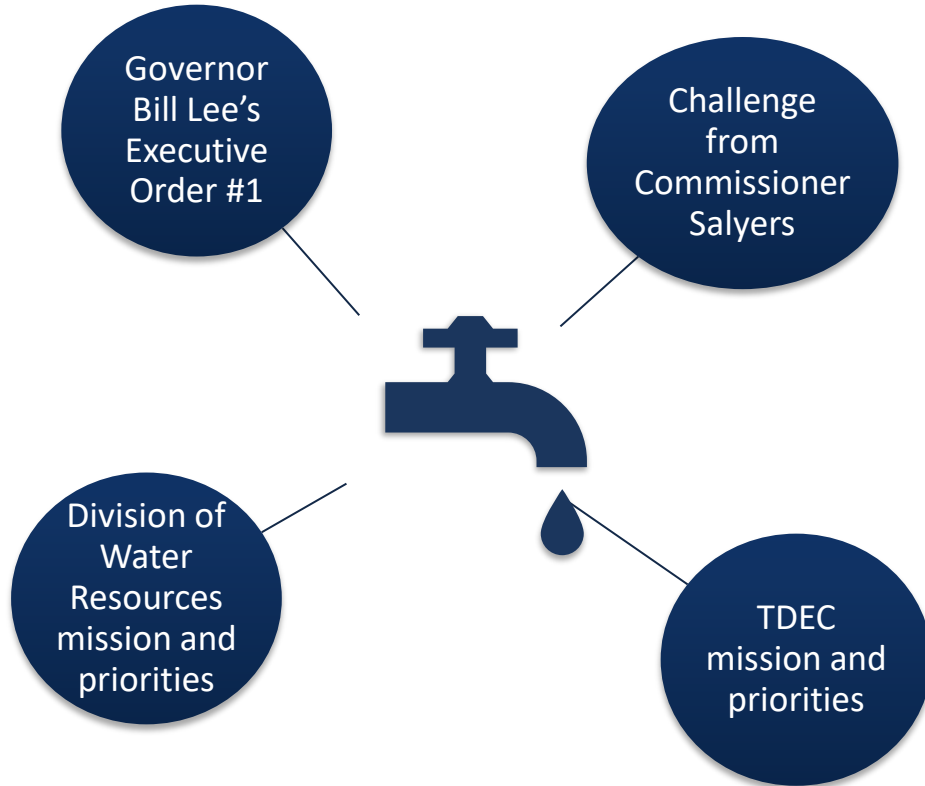
Department of
**Environment &
Conservation**

SRF Strategic Initiatives for Small and Disadvantaged Communities

Vena Jones, PG

TDEC DWR State Revolving Fund Loan Program

Strategic Use of SRF Set-Asides



SRF supports **Small and Disadvantaged Communities (SDCs)** – an effort to bring financial and technical assistance to SDCs with a focus on water quality, sustainability and resilience

Identifying Priorities

- **SRF Technical Advisory Team**
- Defining Small and Disadvantaged Communities (SDCs)
- Asset Management
- Water loss
- Inflow and Infiltration
- Regionalization
- Drinking Water Optimization
- Wastewater Optimization
- Source Water Protection
- Improved Planning and Design
- Early Coordination

Identify – Fund – Assist SDCs

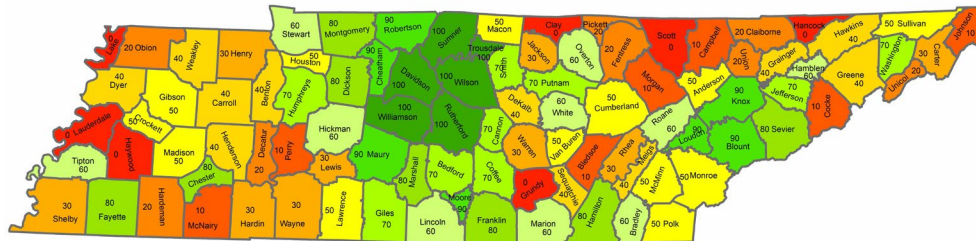
- Improved mechanism of **identifying** small and disadvantaged communities (SDCs)
- Develop a **funding** strategy for SDCs
- **Assist** with specific project development
- Provide direct and indirect **technical assistance**
- Create **tools** SDCs can use
- Gather **data** on SDCs to better understand future needs
- Build on **lessons learned**



Identifying Small and Disadvantaged Communities

TN Ability to Pay Index (ATPI)

- SRF Subsidy & Pilot Projects
- Technical Assistance
- TN Infrastructure Scorecard – tools for systems



Identifying Small and Disadvantaged Communities

- WRRDA (2014) minimum criteria to assess community's ability to pay:
 - Population trend
 - Income
 - Unemployment
 - “Any other metrics”
- Updates to existing processes were needed to refine how we define and identify SDCs
 - Populations less than 10,000
 - Dynamic information to capture economic status
- The 2021 ATPI includes multi-year trends of the following data:
 - **Census data** – Population, income, poverty, food stamp dependence
 - **Economic data** – Unemployment, inflation
 - **Financial Data** – Assets, Debt/liabilities, Revenues and Expenditures

2019-2021 Development of Dynamic ATPI

2019 ATPI

- 4 Variables for affordability score:
 - Median household income
 - Unemployment
 - Food stamp dependence
 - Families in poverty

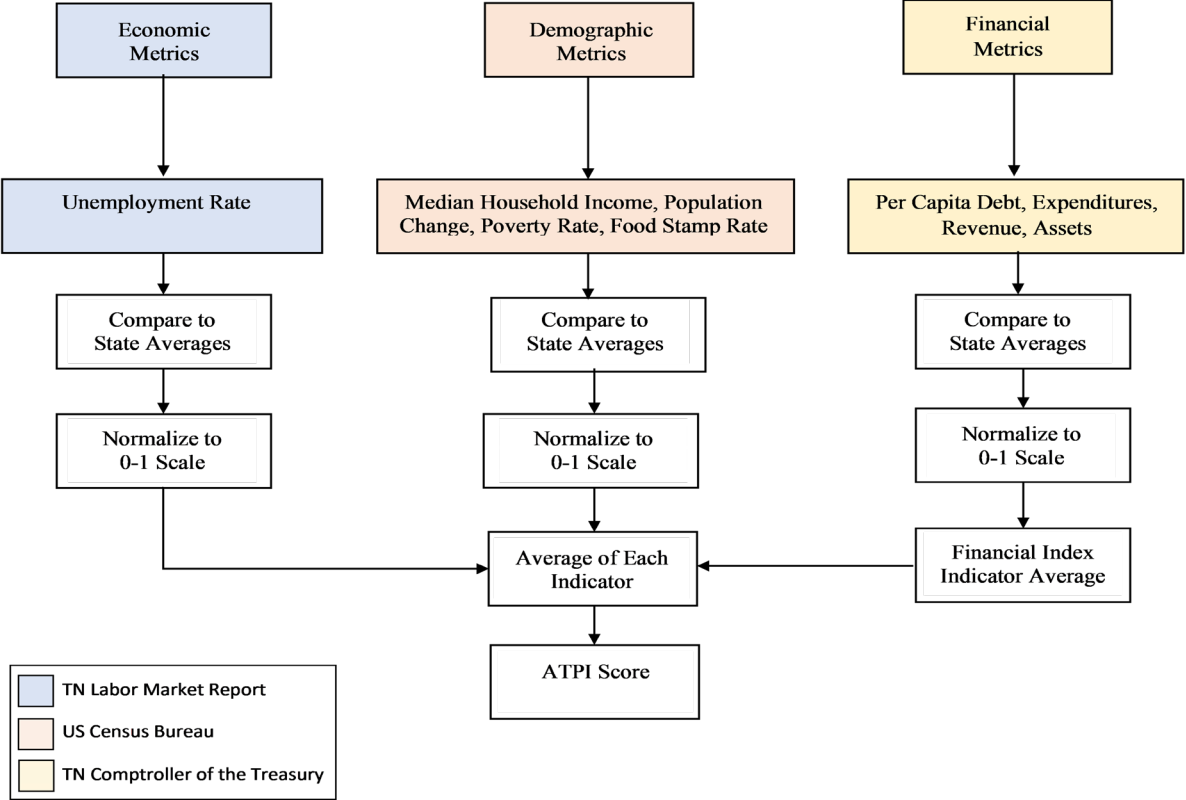
2020 ATPI

- 7 Variables for affordability score:
 - Median household income
 - Unemployment
 - Food stamp dependence
 - Families in poverty
 - Change in population
 - Bond rating
 - Debt

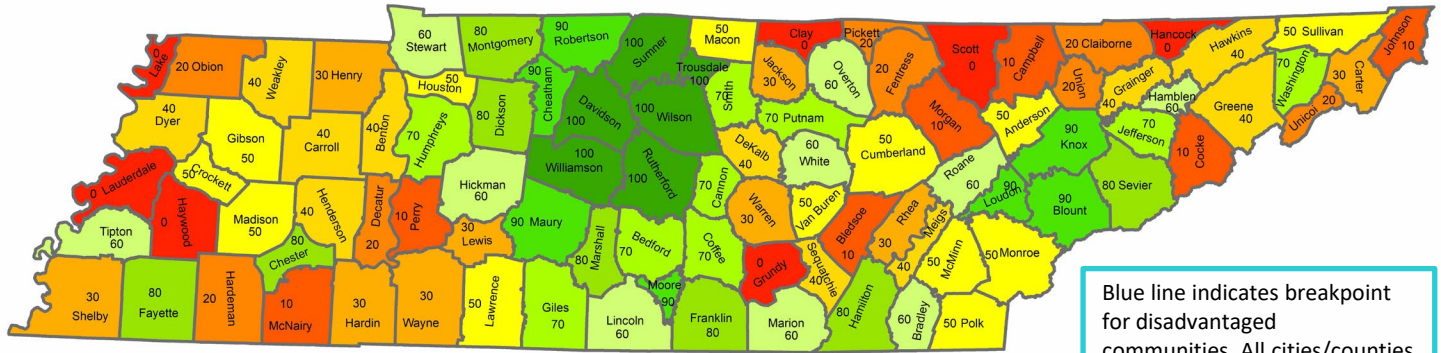
2021 ATPI

- 9 Variables for affordability score:
 - Median household income
 - Unemployment
 - Food stamp dependence
 - Families in poverty
 - Change in population
 - Assets
 - Debts/liabilities
 - Revenue
 - Expenditures

ATPI Calculation Flowchart

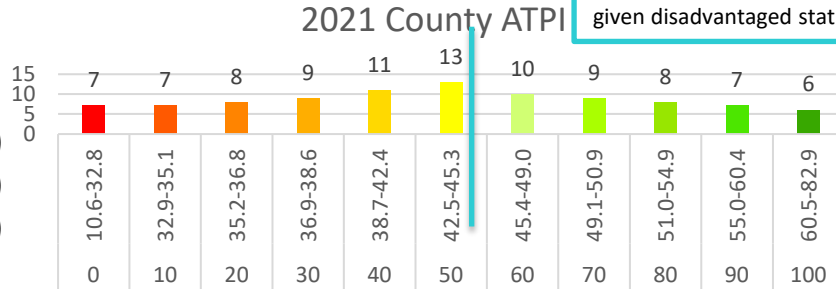


2021 County ATPI Distribution

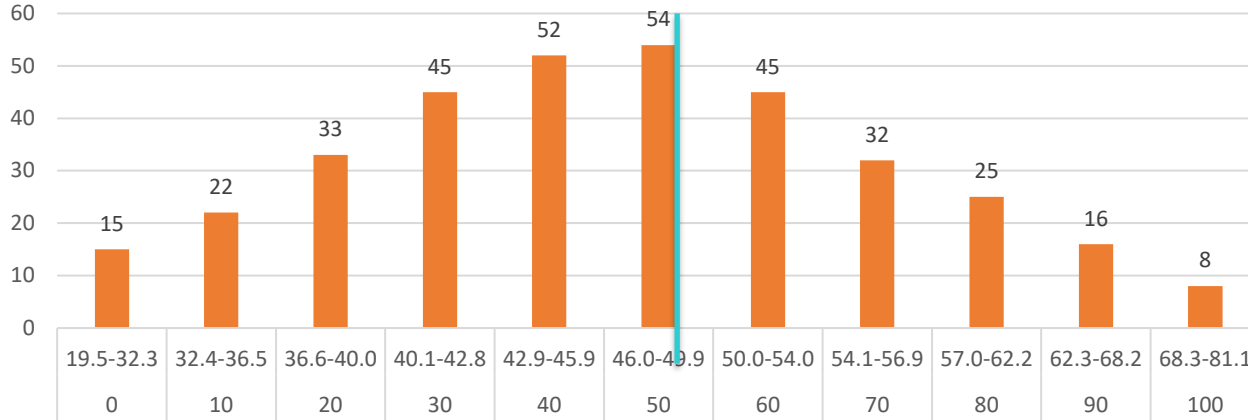


Blue line indicates breakpoint for disadvantaged communities. All cities/counties with an ATPI of 50 or less is given disadvantaged status

2021 County ATPI :
 60 or less – 65 counties (68.4%)
 50 or less – 54 counties (56.8%)
 40 or less – 41 counties (43.2%)



2021 City/town ATPI



2021 City/town ATPI :

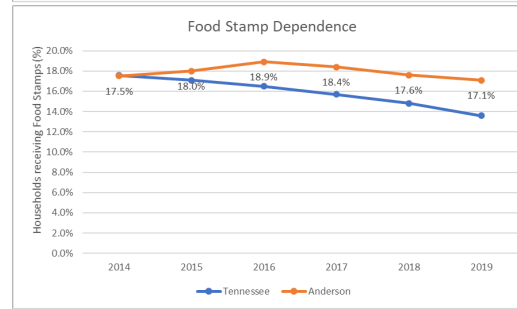
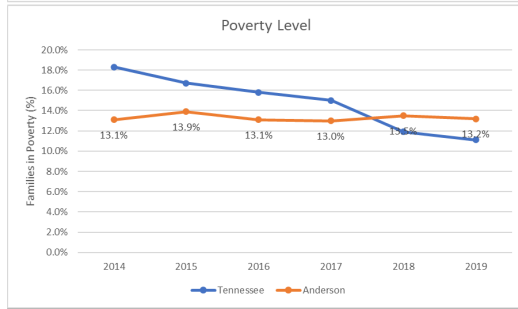
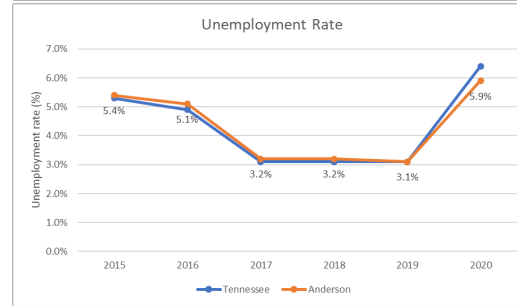
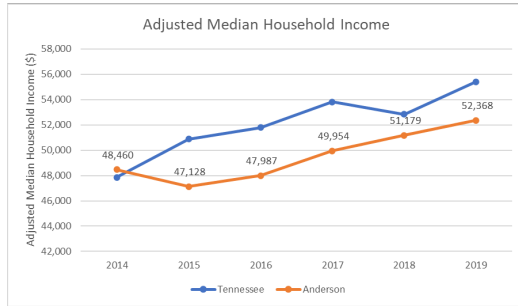
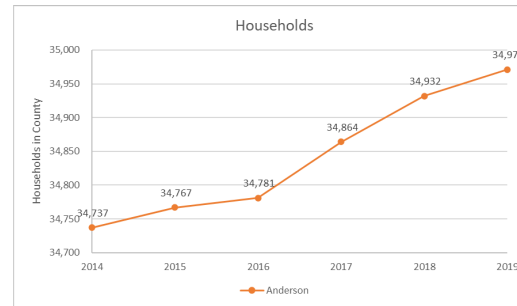
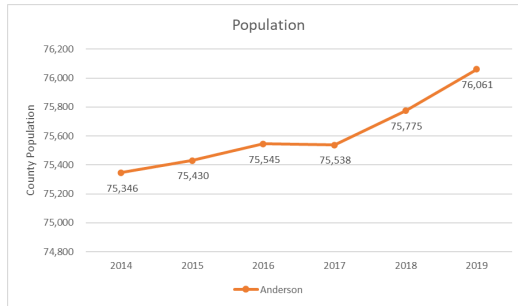
60 or less – 265 out of 346 cities/towns (76.7%)

50 or less – 221 out of 347 cities/towns (63.7%)

40 or less – 167 out of 347 cities/towns (48.1%)

Blue line indicates breakpoint for disadvantaged communities. All cities/counties with an ATPI of 50 or less is given disadvantaged status

Community Level Socio-Economic Trends



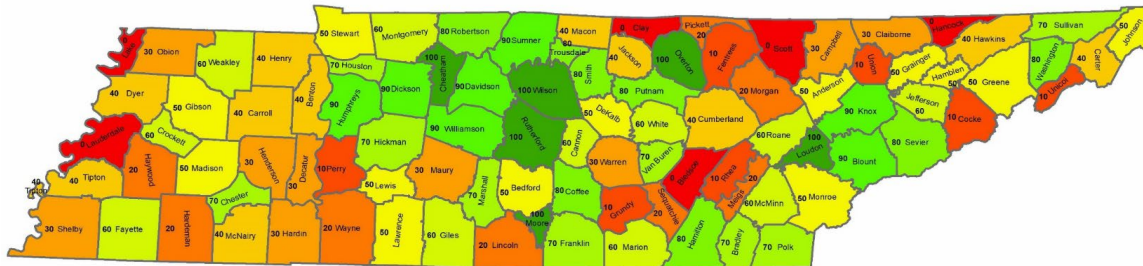
From Identification to Assistance for SDCs

- Set SRF interest rates based on ATPI ranges to provide lowest rates to extreme disadvantaged communities who struggle with affordability issues for SRF loans
- Establish the Disadvantaged Threshold
 - ATPI of 50 or less
- Assist SDCs
 - Initial pilot projects
 - 20% principal forgiveness for any SRF loan
 - 50% principal forgiveness
 - Planning and Design loans
 - » Can be a hurdle for small systems to pay up front for these costs in traditional SRF construction loan
 - Priority areas for drinking and wastewater projects



Targeting the SDC Community

- Opportunities List
 - Population < 10,000
 - ATPI < or = 50
 - 292 DW and WW systems across the state
- Target communities – 67 systems
 - Chronic compliance issues
 - Comptroller status
 - Requested assistance in past, both financial and



Scalable, Placed Based Solutions

- Community led pilot projects
 - Dyersburg- Flood resiliency
 - Oliver Springs – Water loss
 - Bell Buckle-Integrated asset management
 - Camden- Integrated asset management
 - Carthage- I/I study
 - Mason- West TN waste lagoons
 - Trezevant- Small systems drinking water plant

WIIN Grant Awards

- WIIN Grant: Assistance for Small & Disadvantaged Communities Drinking Water Grant
- \$1.3 M total award (45% State Match)
- City of Spencer, TN
 - Planning & Design
 - Disinfection byproducts
 - Source Water
 - Partnership with USDA-RD & University of Memphis
- City of Clifton, TN
 - Planning & Design
 - Turbidity
 - Partnership with TN DOC



Turning Priorities into Technical Assistance

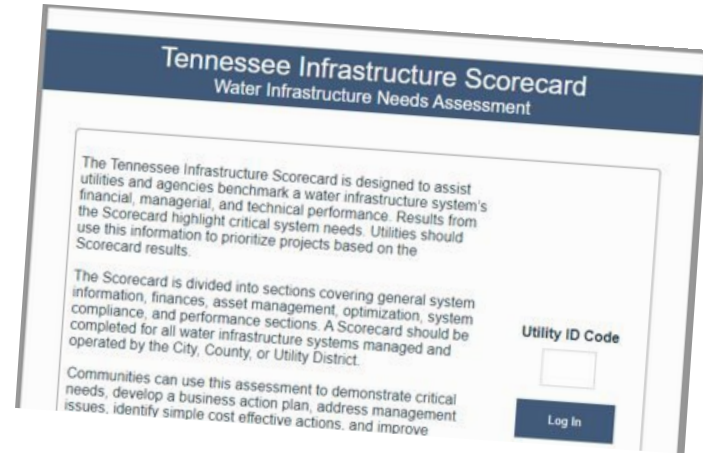
- **Asset Management**
- **Water loss**
- **Inflow and Infiltration**
- Regionalization
- Drinking Water Optimization
- **Wastewater Optimization**
- Source Water Protection
- Improved Planning and Design
- Early Coordination

Tools - TN Infrastructure Scorecard

- In 2019 SRF observed a unifying theme among agencies and utility systems – the need for **asset management assistance**
- We want to work on the foundation of a sustainable utility system = Asset Management
- A utility report card, modified for Tennessee in partnership with technical assistance provider
- An effort to understand broadly where systems are at in planning efforts
- What do utility systems do well?
- Where can our technical assistance partners help?
- TDEC SRF funding priorities and assistance
- Statewide **data-gathering** to determine future needs

Tennessee Infrastructure Scorecard

- Developed in 2019/2020
- Beta-tested in 2020-2021
 - 30 SDCs
- Updated from excel spreadsheet in 2021 to a virtual format in 2022
- Large scale launch in collaboration with SRF, CDBG, and ARP grant opportunities
- Required Scorecard Summary submission for access to \$1.35B in State Fiscal Recovery Fund (ARP) grants
 - Must address critical needs



TN Infrastructure Scorecard

- **Identifies a System's Greatest Needs**
 - Technical, managerial, and Financial (TMF) strengths and opportunities
 - Immediate identification of critical needs
 - Trends and simple system updates
 - Business action plans leading to capital improvement plans
- **Benchmarks and Assesses**
 - Financial data (rates, revenues, debt, etc)
 - Monetizes concerns: rates, revenues, and costs
 - Asset Management
 - Drinking Water (water loss, optimization, system age, compliance)
 - Wastewater (I/I, optimization, system age, compliance)
- **Supports the State Agency**
 - For technical assistance-relevant topics
 - For funding priorities and assessing statewide needs

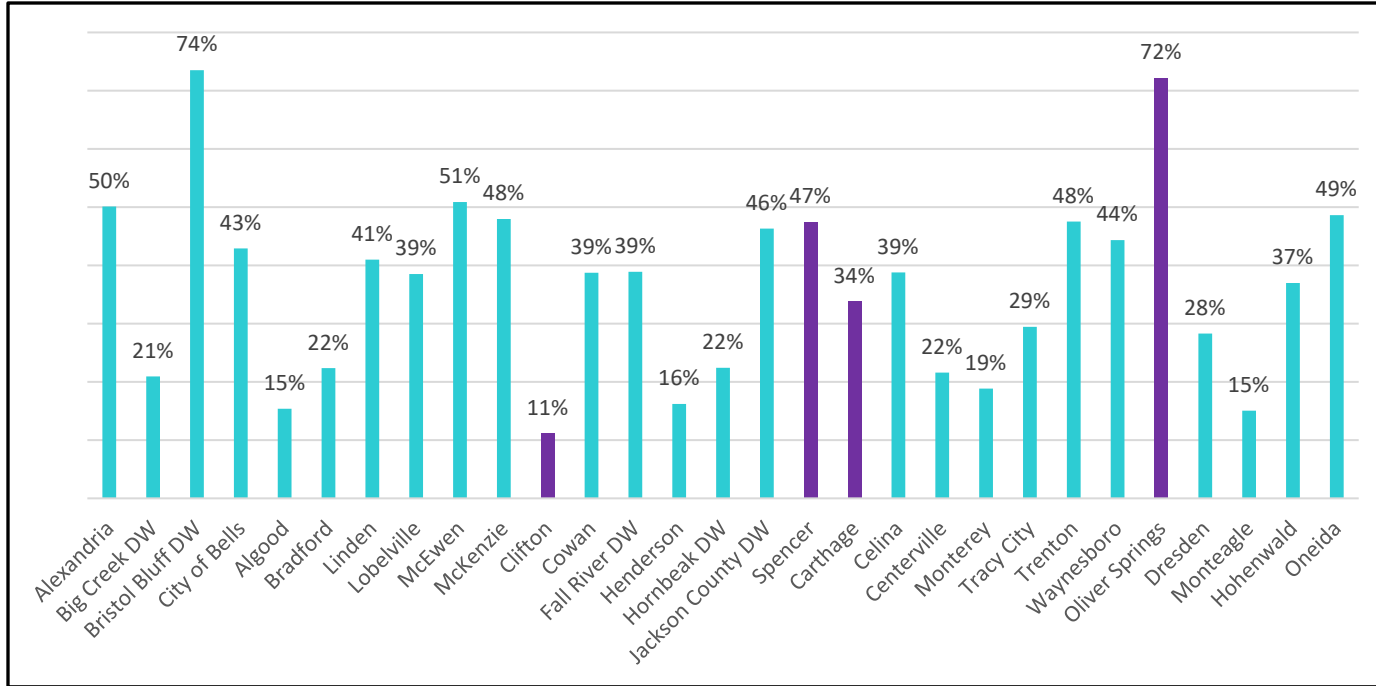
Scorecard Breakdown

- Water Infrastructure Type
 - Drinking water
 - Wastewater
 - Stormwater
- Unified elements
 - Financial, regionalization, asset management, comparison of employee to customer ratios, significant non-compliance, risk assessment
- Independent modules based on program needs
 - Drinking water
 - Water Loss
 - Modernization
 - Optimization
 - Lead issues
 - Energy efficiency

System Level Scorecard Results

ASSET MANAGEMENT		WATER LOSS	
Asset Management Plan	Yes	Unaccounted Water Loss	17%
GIS Mapping	>75%	Millions of Gallons/year	53.29
Inventory and Condition Assessment	Yes	Production Cost/year	\$306,950.40
Planned O&M and Work Order System	Unsure	INFLOW and INFILTRATION	
Meter Testing & Changeouts	Yes	Inflow and Infiltration	58%
Capital Improvement Plan & Budget	Yes	Millions of Gallons/year	262.80
IT Infrastructure	Yes	Treatment Cost/year	\$1,568,916.00
MODERNIZATION			
Drinking Water Plant >80% Capacity	No	Wastewater Plant >80% Capacity	No
Age of Drinking Water Plant	10-30 years	Age of Wastewater Treatment Plant	30-50 years
Percentage of lines older than 50 years	>50%	Percentage of lines older than 50 years	>50%
COMPLIANCE			
Drinking Water Violations	Yes	Meeting Wastewater Permit Requirements	Yes
State Mandated Compliance Order (Water)	No	State Mandated Compliance Order (WW)	No
Meeting Order Requirements (Water)	NA	Meeting Order Requirements (WW)	NA
STORMWATER			
Stormwater Management Plan			N/A
System-Wide Map			N/A

Drinking Water Loss by System (2020 ver1.0)



Drinking Water Systems 2022 version 2.0

- 212 Drinking water systems completed Scorecard
- 141 of those systems are disadvantaged
- Average water loss among all systems is 33%
- 43 systems have WL that exceeds 40%
- 333,163,109 TRILLION gallons of treated water lost annually

- WL averages stayed consistent
 - SDCs average 37% (2020)
 - SDCs average 35% (2022)
 - All systems average 33%



SDCs and Asset Management (2020 ver. 1.0)

- 29 communities complete
- 60% - NO asset management plan
- 62% - some level of GIS for newest collection and distribution lines
- 40% have no O & M schedule or work order system

Communities and Asset Management			
	Plans	GIS	Capital Improvement Plan
Alexandria	No	No	Yes
Big Creek DW	Yes	Yes	Yes
Bristol Bluff DW	No	Yes	Yes
City of Bells	No	No	No
Algood	No	Yes	Yes
Bradford	No	No	No
Linden	No	Yes	Yes
Lobelville	No	No	No
McEwen	No	Yes	No
McKenzie	Yes	Yes	Yes
Clifton	Yes	Yes	No
Cowan	Yes	No	Yes
Fall River DW	No	Yes	Yes
Henderson	Yes	Yes	Yes
Hornbeak DW	Yes	Yes	Yes
Jackson County DW	Yes	Yes	Yes
Spencer	No	No	No
Carthage	No	No	Yes
Celina	Yes	No	No
Centerville	No	Yes	Yes
Monterey	Yes	Yes	Yes
Tracy City	Yes	Yes	Yes
Trenton	No	Yes	No
Waynesboro	Yes	Yes	Yes
Oliver Springs	No	Yes	No
Dresden	No	No	No
Monteagle	No	No	No
Oneida	Yes	Yes	Yes
Hohenwald	No	No	No
NO	17	11	12
YES	12	18	17

Asset Management (2022 ver. 2.0)

- 212 DW systems
- 151 reported no AMP
- AMP = Yes
 - BUT –
 - No digital mapping +16 additional systems
 - No inventory +11 additional systems
 - No CIP or budget +10 additional systems
- 188 systems don't have a qualifying AMP
- 89% of DW systems that completed an Infrastructure Scorecard do not have a comprehensive AMP

Observations

- MOST lack O&M schedules and work order system means systems are still reactionary
- Understanding of what Asset Management Plans are and sophistication of plans varies widely
- Align terminology where appropriate to improve asset management
 - Drinking water - Capacity Development Plans
 - Wastewater - CMOMs
 - CWSRF – Fiscal Sustainability Plans
- Significant push-back on doing AMPs
- Need education and outreach to explain benefits
- Need statewide guidance on AMP

Next Steps: Business Action Plans or CIPs

- Business Action Plan Framework
 - Uses critical needs ID'ed in Scorecard and any other relevant data
 - evaluate overall system performance and make recommendations
 - current status, positive and favorable findings
 - Identify deficiencies, issues and unsustainable conditions and practices
 - Prioritizes most critical needs
 - Work with communities to establish short- and long-term goals



BUSINESS ACTION PLAN
CITY OF SPENCER, TENNESSEE

August 31, 2021



Putting Scorecard to the Test

- Currently being used as self-assessment of critical needs for any system seeking ARP grant dollars
 - 358 Scorecards complete
 - NOIs from 271 systems seeking nearly \$900M in 2022
 - Pre and post award requirements
 - Must eliminate any SNCs or AMP red flags with ARP grant \$\$
 - Must address min. 2 critical needs if red flags exist
 - \$1.35B to be obligated by Dec. 2024
- **All systems** will certify AMP complies with minimum requirements and send in spreadsheet of capital expenditure priorities
 - Ranks inventoried assets using criticality equation
 - Based on age, condition, potential for failure, risk of failure
- TN Infrastructure Scorecard can be a useful tool for evaluating community critical needs requests for stimulus dollars
- Encourage or even require updates to best practices
- Ensure proposals address those critical needs
- Can be completed pre and post project to show technical, financial and/or managerial improvements
- Can quantify water loss, I/I, asset management gains

Multi-Agency Partners

Tennessee Department of Environment & Conservation
(TDEC)

Tennessee Department of Economic and Community
Development (ECD)

Tennessee Office of the Comptroller

TN USDA-Rural Development

University of Tennessee

TN Association of Utility Districts

Environmental Finance Center

Check out the Scorecard

- <https://ams.taud.org/ScoreCard/Login.aspx>
- Generic logins:
 - Srf
 - TDEC1

Questions? Ask TN's Financial Program Team!

Adeniyi Bakare

SRF Manager

Adeniyi.R.Bakare@tn.gov

615-934-8905

Vena Jones

SWIG Manager

Vena.L.Jones@tn.gov

615-898-9499



Ask.SRF@TN.gov

California State Water Boards Local Assistance Set-Aside

James Garrett, PE
Sr. Water Resource Control Engineer
Division of Financial Assistance



April 7, 2022

Agenda

- **CA Uses of Cap Grant Set-Asides**
- **Local Assistance Set-Aside**
- **Technical Assistance Funding Program**
- **Self-Help Enterprises' Third-Party Assistance**
- **CA & Self-Help Enterprises' Partnership**

CA Uses of Capitalization Grant Set-Asides



CA Uses of Cap Grant Set-Asides (cont.)

- **Administrative Set-Aside:** Technical and administrative personnel. A portion funded the audited financials for the Drinking Water SRF program
- **Small Water System Technical Assistance (TA) Set-Aside:** TA & assist third-party TA providers
- **State Program Management Set-Aside:** Division of Drinking Water's (DDW) Public Water System Supervision regulatory program
- **Local Assistance Set-Aside:** Third-party TA contracts with Rural Community Assistance Corporation (RCAC), California Rural Water Association (CRWA), and Self-Help Enterprises (SHE)

Local Assistance Set-Aside

- On-site Technical Assistance (TA) to 148 public water systems
- On-site/Online workshops, symposiums, & fairs for over 1,832 public water systems
- Technical, Managerial, and Financial (TMF) Assistance
- California TA Provider (CalTAP) funding fairs
- California will continue this assistance with the Safe and Affordable Drinking Water Fund

Set-Aside TA Contracts

TA Provider	Area of Focus	Type of TA Provided					
		Rate Studies	Income Surveys	Funding Applications	Community Outreach	Compliance-Related Documents	Trainings & Workshops
<i>DWSRF Set-Aside</i>							
California Rural Water Association	Statewide	✓		✓		✓	
Rural Community Assistance Corporation	Statewide	✓	✓	✓		✓	✓
Self-Help Enterprises	Central Valley	✓	✓	✓	✓	✓	
<i>CWSRF Administration Fund</i>							
California Rural Water Association	Statewide	✓	✓	✓	✓	✓	

Technical Assistance (TA) Funding Program

What TA Funding does:

- Addresses community drinking water and wastewater needs

Who may receive TA:

- Community & State Small Water Systems
- Non-Profit NTNC Water Systems
- Tribes
- Communities not served by a Public Water System

Who provides TA:

- TA Providers (organizations contracted by the Water Board whom the state board has determined is competent to assist a water system”

TA Funding Program (cont.)

How to apply for TA:

- Assistance Requests are continuously accepted and available on the [TA Funding Program webpage](#)

Potential Assistance Types:

- Project coordination and development
- Engineering and environmental analysis
- Legal assistance
- Additional eligible TA work

TA Application Process

- DFA accepts Assistance Requests (AR) on a continuous basis
- Request for TA Form is available on the TA Funding Program webpage:
https://www.waterboards.ca.gov/water_issues/programs/grants_loans/proposition1/docs/ta_request_form.pdf
- Submit to DFA-TARequest@waterboards.ca.gov

System Information

TA Need

TA Request

Contact Information

REQUEST FOR TECHNICAL ASSISTANCE

Instructions: If an item is not relevant or unknown, enter "N/A" or "unknown."
Please e-mail the completed form to: DFA-TARequest@waterboards.ca.gov

Date of Submittal:

Name of Requestor:

A. Community, System, or School Name:

Public Water System ID No. (if applicable):

County:

Number of Service Connections:

Service Area Population:

Type of Organization: Municipal entity Private entity (Select one: nonprofit; for profit)

Tribe School/School district/Local education agency Other:

Estimated Median Household Income (MHI): \$

(Source:)

Estimated percentage of second or vacant homes:

% Service Area Map included

B. Type of TA Need: Drinking Water Wastewater Storm Water Groundwater

C. Problem: Briefly summarize the problem or the TA needs.

D. Request: Briefly describe the assistance being requested.

Is the regulatory agency (DDW, LPA, Regional Water Board, etc.) supportive of this project?

Yes, name of contact person/agency: No

Is this request associated with a compliance order?

Yes, Compliance Order No.: (attach a copy if available) No

E. Contact Information: Please provide a contact for correspondence regarding this request.

Name

Title/Organization

Mailing Address

City/State

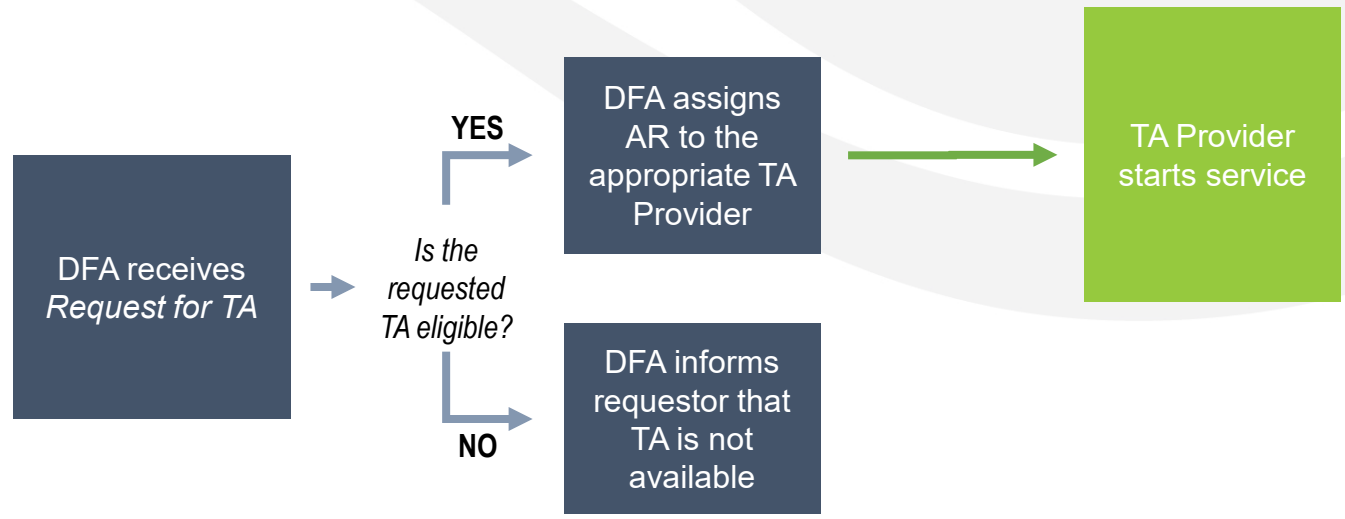
Zip Code

Phone Number

E-mail Address

TA Request Form, updated 06/15/2021

TA Process



Self-Help Enterprises' Third-Party Assistance

- TA Contract approved November 2018
- Asses the Technical, Managerial, and Financial (TMF) capacity of a disadvantaged community
- Assist Small PWS having significant problems complying with applicable Safe Drinking Water Act requirements
- Complete necessary TMF elements after projects are funded by the State Water Board.
- A total of 10,543 hours of direct assistance provided to 79 small water systems From September 2018 to June 2021.

CA & Self-Help Enterprises' Partnership

- New TA Funding Agreement executed March 2021
- Purpose of supporting the Human Right to Water for small communities and drinking water systems
- New services to complement the TA Funding Program
 - Revolving Bridge Loans for Interim Construction Financing
 - Emergency Fund Grants
 - Engineering Design & Full Planning
- Amended March 2022 with additional services
 - Incorporated Local Assistance Set-Aside tasks
 - O&M Bridge Loans for Revenue Shortfalls due to COVID-19

Additional Information & Questions?

- TA Funding Program:
https://www.waterboards.ca.gov/water_issues/programs/grants_loans/proposition1/tech_asst_funding.shtml
- TA Fact Sheet:
https://www.waterboards.ca.gov/water_issues/programs/grants_loans/proposition1/docs/prop1_ta_fact_sheet.pdf
- Request for TA Form:
https://www.waterboards.ca.gov/water_issues/programs/grants_loans/proposition1/docs/ta_request_form.pdf



Self-Help Enterprises: Technical Assistance via SRF Funding

Eva Dominguez and Armando Murrieta

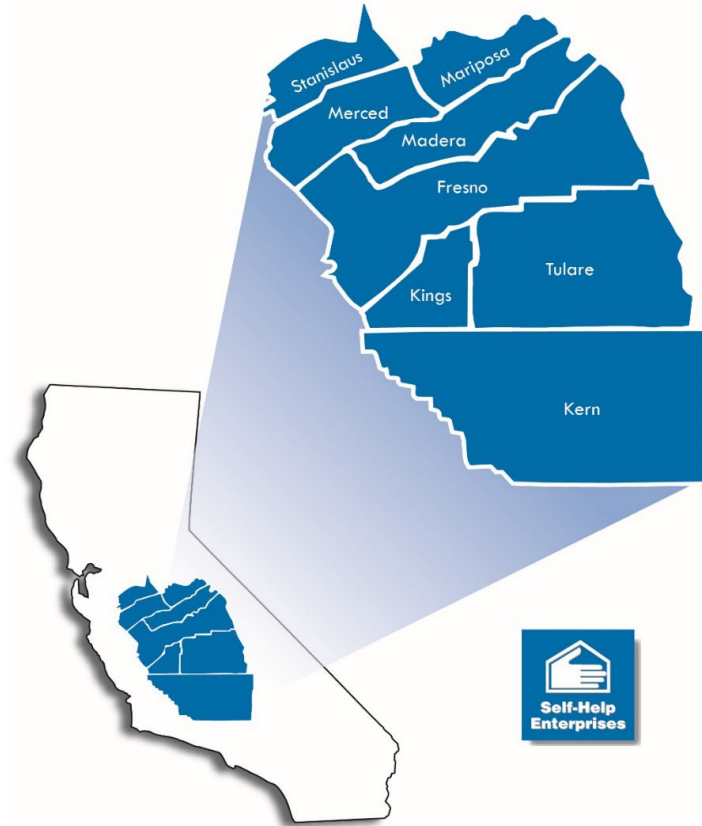
April 7, 2022



Self-Help Enterprises (SHE)

SHE is a nationally-recognized non-profit housing and community development organization whose mission is to work together with low-income families to build and sustain healthy homes and communities.

Community Development Program provides technical assistance and leadership development in rural communities who face clean water, sanitary sewer and other infrastructure challenges.





Funding Agreement
Support

2018-2021:
21 Communities



Technical Support

2018-2021:
17 Communities



Technical, Managerial
and Financial Capacity
Building

2018-2021:
7 Communities

Overview of SHE Technical Assistance



Funding Agreement Support

Souls Mutual Water Company

Serves 36 connections

Received planning funding in late 2015 for a consolidation with a neighboring City – faced many issues

- City had bad experience with recent consolidation

- Board members all departed during planning

- Environmental concerns popped up

- Issues with CalTrans reviewing and approving plans

Support provided:

- Grant administration – disbursement claims, reporting, etc.

- Consolidation coordination

- Training for new board

- Liaison between board and engineer, environmental consultant, State project manager, and other stakeholders

- Complete and submit construction application



Tevison Community Services District

Approximately 130 homes

Water Well Emergency Project

Well collapsed – November 2017

Grant 1 for bottled water and two storage tanks

Grant 2 for new emergency well

Support provided:

Grant administration

Addressing issues with contractor

Improving communication with contractor

Community outreach and communication

Support with finding water to purchase





Technical Support



Pond Mutual Water Company

Serves 18 connections

Community-wide point-of-use program for arsenic
Pilot phase conducted

Implementation Plan developed

Installation of POU devices throughout community

Support provided

Coordination with vendors, plumbers, water operator, &
board

Support during pilot phase

Support with development of rules and regulations for
program

Planning application for long-term solution



TMF Capacity Building

Lanare Community Services District

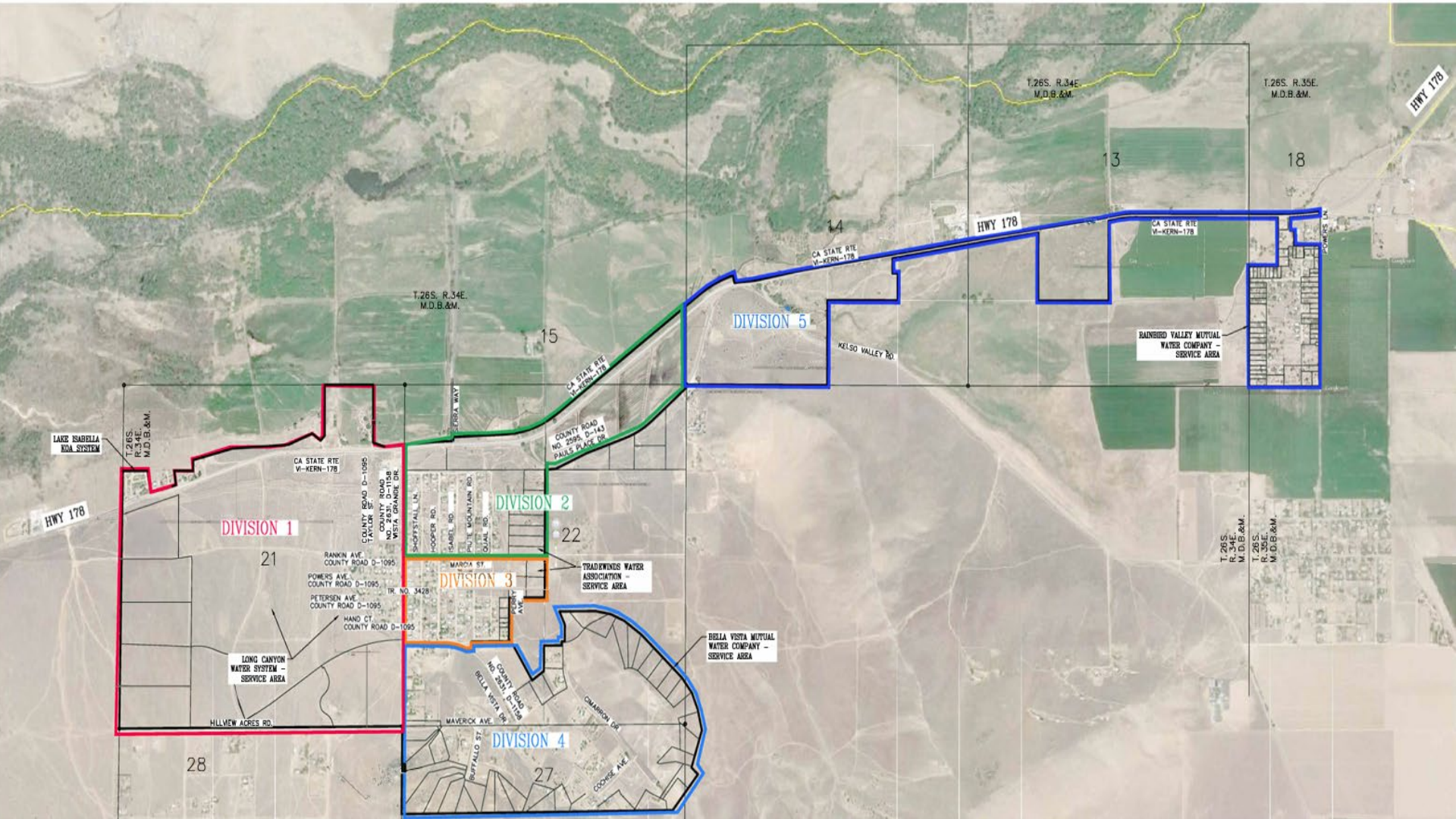
- Serves 150 connections
- System has been in receivership since 2009
- Training for new board members
 - Rules and regulations for board meetings
 - Board member recruitment
 - Water system basics
 - Hiring staff and contractors

Regional TMF Trainings

- Quarterly trainings for board members to build TMF capacity
 - Accounting Basics
 - Financial Management
 - Board Rules and Regulations
 - How to Run a Board Meeting
 - Annual Reports and Consumer Confidence Reports
- Board Sustainability Leadership Institute
 - 4 month training program for new board members
 - Covered the materials from the quarterly trainings and more



Weldon Regional Water Project



LAKE ISABELLA
KMA SYSTEM

T.26S.
R.34E.
M.D.B.&M.

DIVISION 1

21

LONG CANYON
WATER SYSTEM -
SERVICE AREA

28

CA STATE RTE
V-KERN-178
COUNTY ROAD D-1095
TAYLOR ST
COUNTY ROAD D-1095
WITA GRANDE DR

RANKIN AVE.
COUNTY ROAD D-1095
POWERS AVE.
COUNTY ROAD D-1095
PETERSEN AVE.
COUNTY ROAD D-1095
HAND CT.
COUNTY ROAD D-1095

HILLVIEW ACRES RD.

ELIWA WAY

DIVISION 2

22

DIVISION 3

DIVISION 4

BELLA VISTA MUTUAL
WATER COMPANY -
SERVICE AREA

COUNTY ROAD
NO. 2595 D-143
PAULS PLACE DR

SHOFTSALL LN
ISABEL RD
PULE MOUNTAIN RD
COLE RD
MAYNARD ST

TR. NO. 3428
MAYNARD ST
NO. COUNTY ROAD 1018
BELLA VISTA DR

MAVEROCK AVE
BUFFALO ST

CHAMBERLAIN DR
COONCE AVE

T.26S. R.34E.
M.D.B.&M.

15

CA STATE RTE
V-KERN-178

DIVISION 5

14

CA STATE RTE
V-KERN-178

KELSO VALLEY RD

HWY 178

T.26S. R.34E.
M.D.B.&M.

13

CA STATE RTE
V-KERN-178

RAINBIRD VALLEY MUTUAL
WATER COMPANY -
SERVICE AREA

T.26S. R.35E.
M.D.B.&M.

18

T.26S.
R.34E.
M.D.B.&M.
T.26S.
R.35E.
M.D.B.&M.

COURSE LN

HWY 178

Funding Sources

- Prop 84 planning grant
 - Dug two test wells
 - Prepared plans and Specs to 90%
 - Prepared purchase agreements for the two test well sites
 - Prepared the California Environmental Quality Act (CEQA) documents and federal cross cutter documents
- Prop 1
 - Technical Assistance
 - Covered legal costs to start the formation process through the Local Agency Formation Commission (LAFCo)
 - Covered costs to get the plans and specs to 95%
 - Inter Regional Water Management Program
- SAFER
 - Technical Assistance

Building Capacity With SRF

- TMF Trainings
 - Understanding the roles of a board member
 - How to hold a board meeting
 - Understanding where clean drinking water comes from
 - Compliance Orders
 - Corrective Action Plans
 - Contamination Notices
- Applying for Funding
 - Emergency funding applications
 - IRWM

Water Equity through SRF

- Gaining Access to Clean Drinking Water
- Replacing Aging Infrastructure
- Lowering Cost through Consolidation
- Building TMF Capacity

Thank you!!

Eva Dominguez

Community Development Manager

EvaD@selfhelpenterprises.org, 559-802-1634

Armando Murrieta

Community Development Specialist

ArmandoM@selfhelpenterprises.org, 559-802-1684



THANK YOU FOR ATTENDING! TIME FOR Q&A

Dallas Shattuck
Shattuck.Dallas@epa.gov

Vena Jones
vena.l.jones@tn.gov

James Garrett
James.Garrett@waterboards.ca.gov

Eva Dominguez
evad@selfhelpenterprises.org

Armando Murrieta
ArmandoM@selfhelpenterprises.org

**You may find additional drinking
water webinars and resources at
www.epa.gov/dwcapacity**