



## RCRA Corrective Action Cleanup + Productive Use

### Economic Profile

# Syngenta Crop Protection

Saint Gabriel, Louisiana

### CONTINUED USE



Agrichemical  
Manufacturer



Chemical  
Manufacturer



Agricultural  
Research



Trucking  
Companies

### CLEANUP OVERSEEN BY Louisiana Department of Environmental Quality

The Syngenta Crop Protection facility, near Baton Rouge, Louisiana, has manufactured pesticides and fertilizer since the 1970s. A wastewater impoundment used at the site before 2001 released contamination into the groundwater.

During the facility's cleanup, Syngenta Crop Protection worked closely with the Louisiana Department of Environmental Quality's (LDEQ) RCRA Corrective Action program to ensure the safe continued use of the property.

Today the site continues to be a vital industrial and economic center for the city of Saint Gabriel, employing over a thousand people and generating over \$222 million in annual sales revenue.



**1,008**

EMPLOYEES



**\$222 million**

ANNUAL SALES



**\$113 million**

ANNUAL WAGES





Imagery ©2021 Landsat / Copernicus, Maxar Technologies, U.S. Geological Survey, USDA Farm Service Agency, Map Data ©2021

The collaboration between the state and Syngenta during the cleanup allowed for manufacturing to continue safely on site. Syngenta Crop Protection is the largest enterprise at the site, with nearly 900 employees and over \$83 million in revenue per year. Other employers at the site include freight and shipping businesses, an organic chemical producer and the Audubon Sugar Institute.

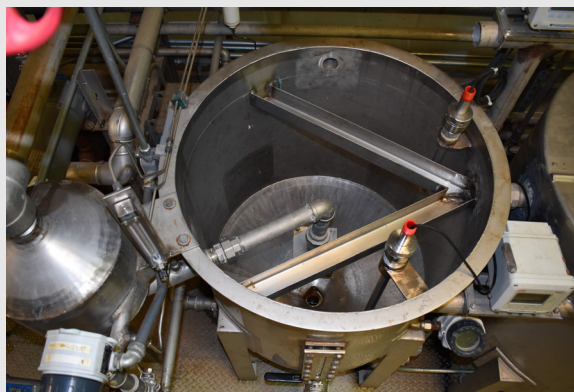
Louisiana State University's Audubon Sugar Institute is dedicated to research and engineering for the state's sugar industry. The Institute performs lab testing and sugar processing research, as well as training sessions on sugar processing methods with sugar refinery factory managers and staff.

Ineos Fluor Americas operates a plant at the site, manufacturing energy-efficient refrigerants for global and domestic use. The Saint Gabriel location supports the company's Latin American trade and expansion.

The site's cleanup has allowed Syngenta and other site users to continue operating safely, safeguarding over 1,000 jobs while supporting the state's agricultural economy.



Quality Distribution is one of three freight companies operating on the site today that support long-distance shipping across the United States.



Sugarcane is Louisiana's leading crop. The sugar industry has been an important part of Louisiana's economy for over 200 years. Overall, Louisiana is the second-largest producer of sugarcane in the U.S., with nearly 500,000 acres of sugarcane farms statewide and an economic impact of \$2.6 billion.

**GROUNDWATER CONTAMINATION SUCH AS THAT WHICH OCCURRED AT SYNGENTA IS ONE OF THE MOST CHALLENGING REMEDIATION SITUATIONS. THE SUCCESSFUL EFFORT BY LDEQ AND SYNGENTA NOT ONLY ACHIEVED CLEANUP GOALS BUT ALLOWED MANUFACTURING TO CONTINUE SAFELY ON-SITE AS THE WORK WAS DONE.**

Dr. Chuck Carr Brown, Secretary, LDEQ

Images used with permission of LSU AgCenter Audubon Sugar Institute.