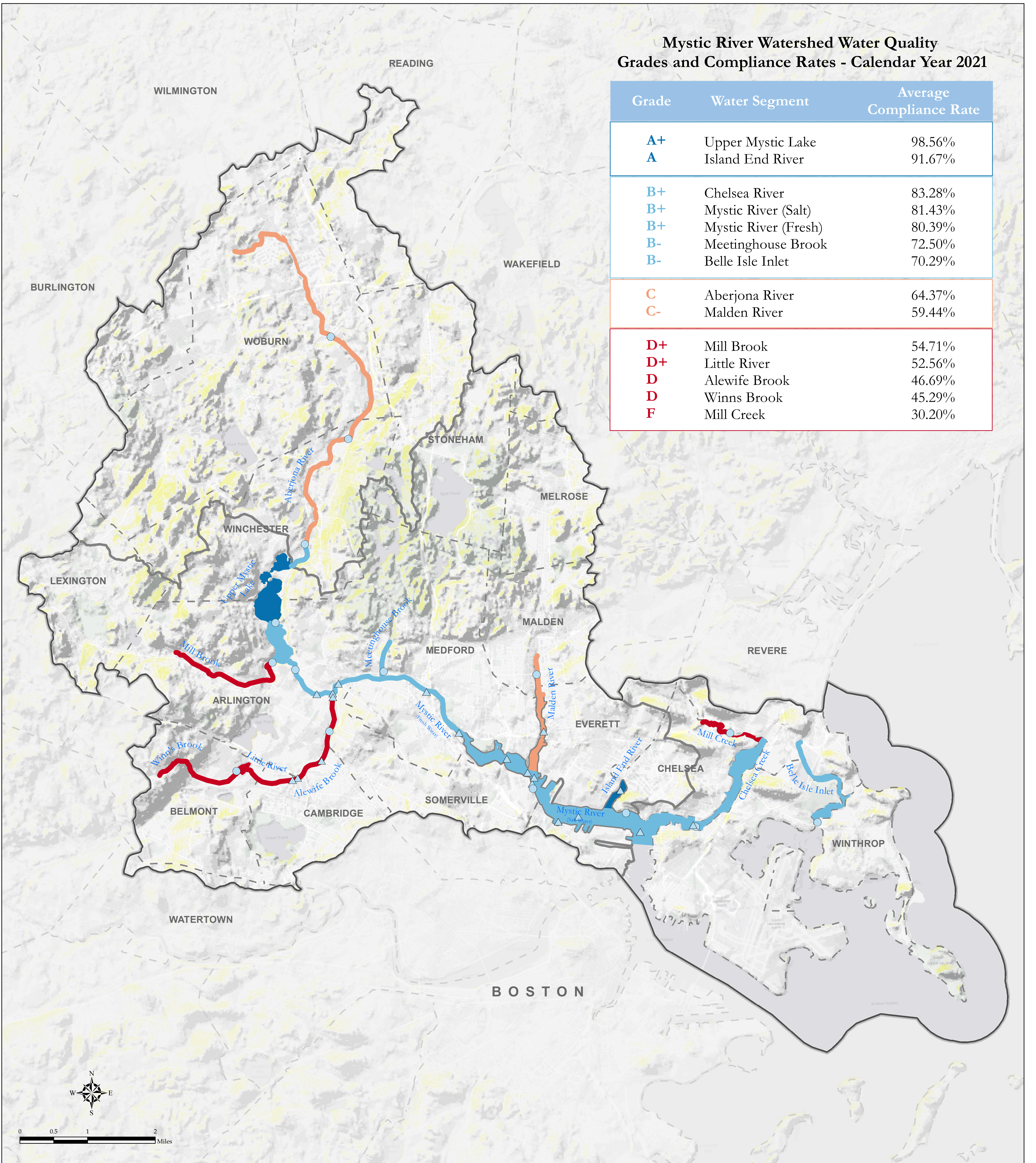


Mystic River Watershed Water Quality Grades and Compliance Rates - Calendar Year 2021

Grade	Water Segment	Average Compliance Rate
A+	Upper Mystic Lake	98.56%
A	Island End River	91.67%
B+	Chelsea River	83.28%
B+	Mystic River (Salt)	81.43%
B+	Mystic River (Fresh)	80.39%
B-	Meetinghouse Brook	72.50%
B-	Belle Isle Inlet	70.29%
C	Aberjona River	64.37%
C-	Malden River	59.44%
D+	Mill Brook	54.71%
D+	Little River	52.56%
D	Alewife Brook	46.69%
D	Winns Brook	45.29%
F	Mill Creek	30.20%



Average Compliance Rates for Swimming and Boating Standards

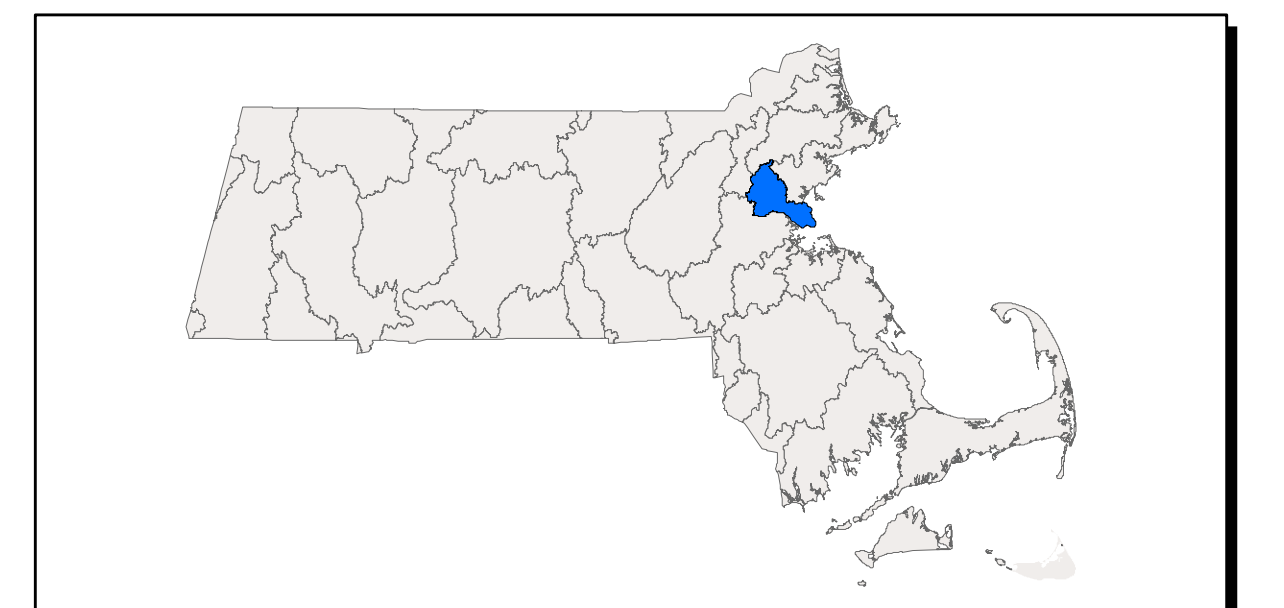
Grade	A	B	C	D	F
Compliance Range	100-86	85-71	70-56	55-40	39-0

Monitoring Points

- Mystic River Watershed Association
- Massachusetts Water Resources Authority
- Mystic River Watershed
- Town Boundary

2021 Mystic River Watershed Report Card

(based on 2019-2021 bacterial data)



Data Sources: Mystic River Watershed Association, U.S. EPA, Massachusetts Water Resources Authority, MassGIS. Basemap: Canvas/World Light Gray Base © ESRI and its data suppliers. EPA Region 1 GIS Center map #13390, 7/14/2022