

Economic Profile

Former Appliance Park East Columbia, Maryland

BEFORE

Appliance manufacturing

AFTER



Business Park

CLEANUP OVERSEEN BY Maryland Department of the Environment

The Former Appliance Park East facility covers 1,125 acres in Columbia, Maryland. From 1970 to 1990, General Electric (GE) manufactured household appliances at the facility, primarily electric ranges and ovens.

With oversight by the Maryland Department of the Environment under the RCRA Hazardous Waste Cleanup Program (formerly the RCRA Corrective Action Program), GE is addressing soil and groundwater contamination caused by the manufacturing operations at the facility. Restrictions were put in place at the facility to restrict residential land use and prohibit using groundwater as a source of drinking water.

With cleanup well underway, the property has been redeveloped as the Snowden Square business park. The business park is now home to 11 businesses, employing more than 150 people and generating over \$28 million in sales yearly.



ANNUAL SALES

\$28 million



EMPLOYEES

156

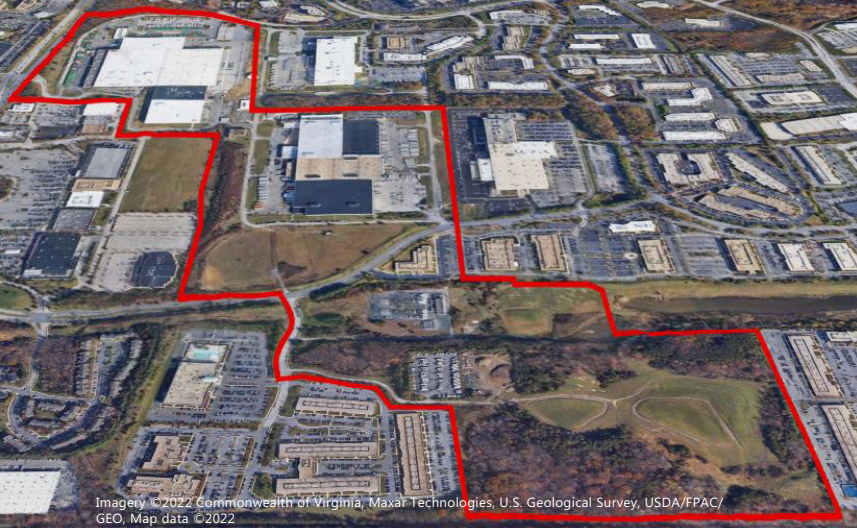


ANNUAL WAGES

\$9 million

For more information about RCRA and the economic benefits of site reuse, visit www.epa.gov/hw/learn-about-hazardous-waste-cleanups





ADDRESSING THE ENVIRONMENTAL CONCERNS AT THIS FORMER FACILITY HAS ALLOWED THE AREA TO RETURN TO PRODUCTIVE ECONOMIC REUSE.

GE ended operations in 1990 and sold most of the property for redevelopment. GE retained ownership of 21 acres where three closed landfills are located. In 1991, EPA issued a RCRA Hazardous Waste Cleanup Permit requiring GE to address any contamination present at the facility. GE has completed various corrective actions to address contamination at different areas of concern at the facility. GE also cleaned up diesel fuel contamination under the direction of the Maryland Department of the Environment Oil Control Program.

In 2012, EPA selected a final remedy for the facility consisting of extraction and treatment of contaminated groundwater, soil vapor extraction, long-term groundwater monitoring, and land and activity use restrictions. The soil vapor extraction system was decommissioned after EPA issued a "no further action" determination in 2018. The final remedy is implemented by an EPA Hazardous Waste Cleanup Permit which was renewed in 2022. GE will continue to submit semi-annual reports documenting progress of the remedy.

The property has now been redeveloped into a business park known as Snowden Square and was subdivided for sale to the various merchants. Current businesses at the park include a mattress company headquarters, a karate and fitness studio, a pharmaceutical preparation manufacturing business, storage for a logistics company, a scanning and records management business, a vehicle parts wholesaler, and an RV storage park. There are also wooded areas in the southern portion of the former facility that offer potential areas to support recreational or ecological uses. Through diligent efforts to address environmental concerns under the RCRA Hazardous Waste Cleanup Program, the former Appliance Park East facility has been revitalized for productive economic reuse. It now supports over 150 jobs and contributes an estimated \$9 million in annual employee income.



The Classic Brands specialty sleep products company houses their corporate headquarters at the former facility, featuring a showroom and the latest in mattress technology. The business employs 93 people at this location, with over \$18 million in annual sales.



Intralytix is a biotechnology company that makes products to control bacteria in environmental, food processing and medical settings. This company headquarters brings in more than \$3 million in sales annually.