



R04-26-A-040

1. Applicant Identification

Partners for Active Living dba PAL: Play. Advocate. Live Well. (PAL)  
226 South Spring Street  
Spartanburg, SC 29306

2. Website URL: <https://www.palspartanburg.org/>

3. Funding Requested

- a. Assessment Grant Type: Community-wide
- b. Federal Funds Requested: \$500,000

4. Location

- a) City of Inman, Town of Campobello, City of Landrum
- b) Spartanburg County
- c) South Carolina

5. Target Area and Priority Site Information

- Target area: Census Tracts 45083022901, 45083022902, 45083022500, and 45083022600
- Priority sites
  - Depot Street Site – 700 & 701 Depot St, Campobello, SC 29322
  - Lumber Yard Site – 2, 4, 6, 8 S Main St, 18, 20 S Howard St, & 3, 5 Bomar St, Inman, SC 29349

6. Contacts

a. Project Director

Leigh MacDonald, Trails Development Director  
864-598-9638  
LMacdonald@palspartanburg.org  
226 South Spring Street  
Spartanburg, SC 29306

b. Chief Executive/Highest Ranking Elected Official

Laura Ringo, Executive Director  
864-598-9638  
LRingo@palspartanburg.org  
226 South Spring Street  
Spartanburg, SC 29306

7. Population

Town of Campobello, SC – 888 (US Census: 2023: ACS: 5-year Estimates)

City of Inman, SC – 3,085 (US Census: 2023: ACS: 5-year Estimates)

8. Other Factors

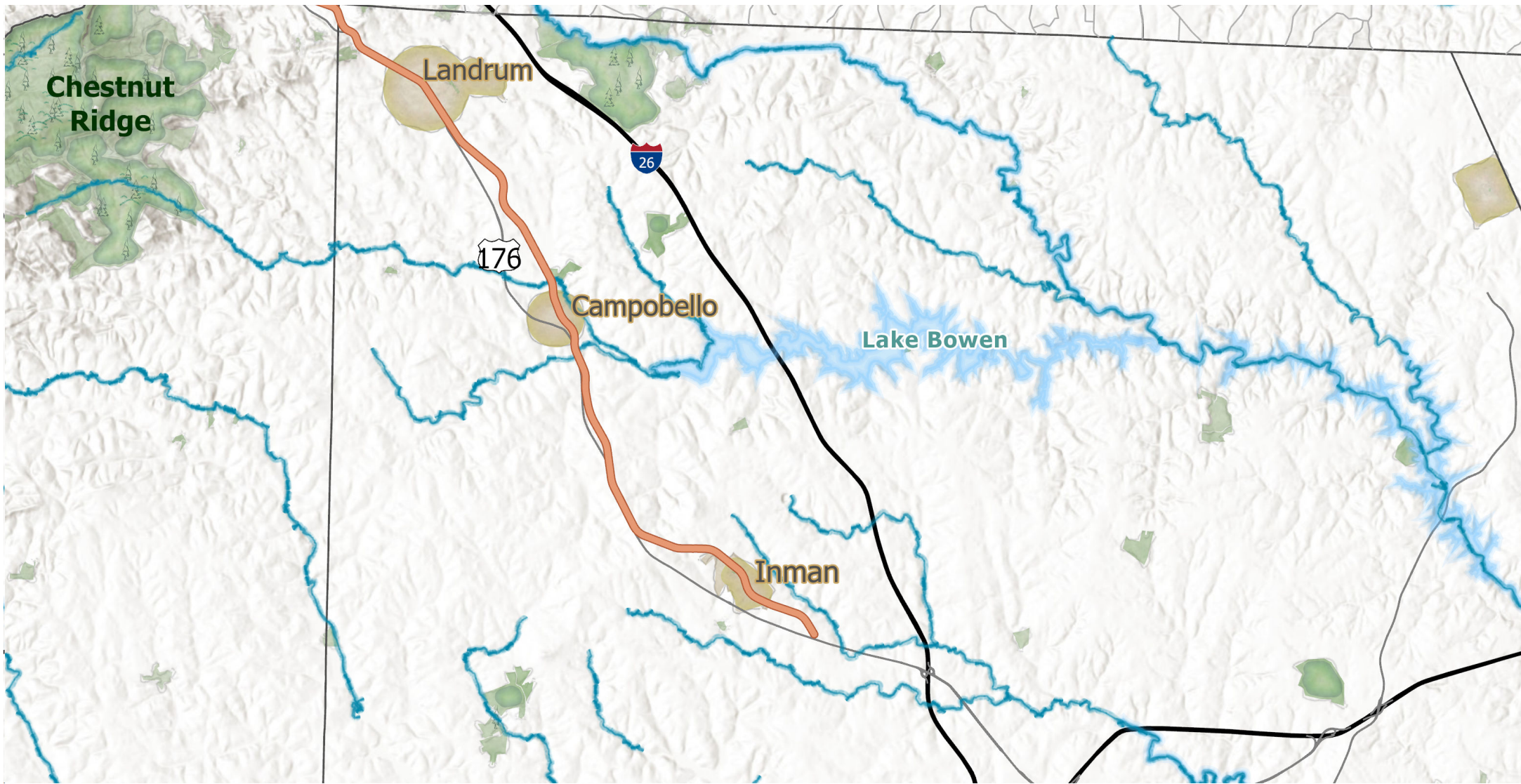
<b>Other Factors</b>	<b>Page #</b>
Community population is 15,000 or less.	4
The applicant is, or will assist, a federally recognized Indian Tribe or United States Territory.	N/A
The priority site(s) is impacted by mine-scarred land.	N/A
The priority site(s) is adjacent to a body of water (i.e., the border of the priority site(s) is contiguous or partially contiguous to the body of water, or would be contiguous or partially contiguous with a body of water but for a street, road, or other public thoroughfare separating them).	1-3
The priority site(s) is in a federally designated flood plain.	1-3
The reuse of the priority site(s) will facilitate renewable energy from wind, solar, or geothermal energy.	3
The reuse of the priority site(s) will incorporate energy efficiency measures.	3
The proposed project will improve local resilience to impacts of extreme weather events and natural disasters.	3
At least 30% of the overall project budget will be spent on eligible reuse/area-wide planning activities, as described in Section 3.A.(2)., for priority site(s) within the target area(s).	8-9
The target area(s) is impacted by a coal-fired power plant that has recently closed (2015 or later) or is closing	N/A

9. Letter from the State or Tribal Environmental Authority

See attached.



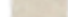
10. Releasing Copies of Applications

Not Applicable.



### Saluda Grade Trail Corridor

#### Legend

-  Proposed Saluda Grade Rail Trail, 31 Miles
-  Protected Lands
-  Municipalities





SC DEPARTMENT of  
**ENVIRONMENTAL  
SERVICES**

**Juli E. Blalock, Chief**  
**Bureau of Land and Waste Management**  
2600 Bull Street  
Columbia, SC 29201

---

January 7, 2026

Aditi Chakravarty  
Region 4 Brownfields Coordinator  
United States Environmental Protection Agency  
61 Forsyth Street SW  
Atlanta, Georgia 30303-8960

RE: EPA Brownfields Community-Wide Assessment Grant  
Spartanburg County, South Carolina

Dear Ms. Chakravarty:

The South Carolina Department of Environmental Services (SCDES), the State's environmental authority, acknowledges and fully supports PAL: Play. Advocate. Live Well.'s (PAL's) application for a Brownfields Community-Wide Assessment Grant. The funding will be primarily focused on the Saluda Grade Trail Corridor in northwestern Spartanburg County.

SCDES appreciates your consideration of the application and hopes for a favorable outcome. Your positive response will assist PAL in its efforts to revitalize properties in their communities. If you have any questions or need additional information, please contact Chris Kaibery, member of my staff, at 803-898-0924 or [christopher.kaibery@des.sc.gov](mailto:christopher.kaibery@des.sc.gov).

Sincerely,

A handwritten signature in blue ink that reads "Juli E. Blalock".

**Juli E. Blalock, Chief**  
Bureau of Land and Waste Management

cc: Betsy Seals, Area Director, Upstate BRLS  
Preston Mousseau, Manager, Brownfields Program  
Chris Kaibery, Project Manager, Brownfields Program



**PAL: Play. Advocate. Live Well.  
FY26 Brownfields Community-Wide  
Assessment Grant  
Narrative**



**1. Project Area Description and Plans for Revitalization; Target Area and Brownfields**

**1.a. Overview of Brownfield Challenges and Description of Target Area** – Founded in 2003, PAL: Play. Advocate. Live Well. promotes health through physical activity initiatives and community partnerships in Spartanburg County, South Carolina. Spartanburg County was established in 1785 as an agricultural center due to its fertile soil and abundant railroad access. Small towns and businesses thrived in rural Spartanburg County. However, by the early 1900s, over-farming had stripped the soil of fertility and erosion from hillside farming caused widespread topsoil loss, further reducing productivity. This, combined with the boll weevil infestation of 1918 – an insect pest infestation that destroyed 60% to 75% of the cotton crop - marked the collapse of South Carolina's cotton industry. The textile boom across the southeast provided alternative employment, though according to the National Council of Textile Organizations employment in South Carolina has declined by more than 87% since its peak in the 1970s. This contraction has left these small towns with **limited job opportunities**. The economic exodus that struck these communities left its mark in the form of **brownfields: vacant and dilapidated commercial, industrial, and agricultural facilities**, many of which are located in or adjacent to downtown areas.

PAL, with our local partners, is developing a 31-mile multi-modal trail, the Saluda Grade Trail (SGT), along the former Saluda Grade Rail line. The **Saluda Grade Trail Corridor**, which extends north from Inman, through Campobello, to the SC state line north of Landrum, consists of Census Tracts (CT) 225, 226, 227.02, 228.05, and 229.01/02, and **is the Geographic Area** for this grant. Census Tracts along the SGT Corridor such as CT-225 (Campobello), CT-229.01/.02 (Inman), and CT-226 (Landrum) which comprise the **Target Areas for this grant**, were hit particularly hard due to the economic contraction in the region, leaving behind a community with **high levels of poverty and a low-income population**. This has been compounded by **blight created by brownfields**, many of which have sat vacant for decades, and infrastructure gaps, including **limited transportation connectivity**, further hindering business development and investment, leaving the target areas struggling to sustain a stable economic base. In addition to brownfields sites, the target areas face environmental challenges in the form of two Superfund sites, two Resource Conservation and Recovery Act (RCRA) sites, two US EPA Release Response sites, and 42 active and nearly 150 inactive UST sites.<sup>1,2</sup> Blight and dilapidated structures in the target areas not only contribute to disinvestment but also create despair and hopelessness throughout the community. Redevelopment of the SGT Corridor provides an opportunity to breathe life back into this area and reinvent the area into a tourism-based economy with an emphasis on healthy, active lifestyles. While funding has been secured for trail development, US EPA Brownfields Assessment Grant funding is needed to support the assessment of key brownfield properties along the trail corridor. This initial step is crucial to the future successful remediation and **redevelopment of these sites, which will in turn stimulate public and private investment, increase recreational and tourism opportunities, provide increased transportation options, and encourage connections to communities and natural and cultural assets in the region.**

**1.b. Description of the Priority Brownfield Site(s)** – The SGT Corridor, including the target areas, are home to numerous brownfields, many of which have ties to the area’s historic agricultural and textile economy. Preliminary inventorying in the target areas identified more than 25 potential brownfields properties (over 250-acres), including vacant industrial sites, service stations, junk yards, and agricultural chemical facilities. Brownfields pose serious health and safety risks to current residents and patrons living in or visiting the target areas, as well as visitors utilizing the future trail. PAL and local government partners have identified redevelopment of brownfields along the SGT Corridor as a critical step to creating safe, walkable communities and stimulating the local economy. The following two priority sites have been identified.

<b>Depot Street Site</b>	Acreage: 60.76 acres	Location: 700 & 701 Depot St, Campobello, SC
<b>Past Land Use:</b> This site, which adjoins the Saluda Grade Rail Line, was historically occupied by a train depot and a trucking company including fueling and repairs. The adjoining property to the south operated as AB Wood Chemical Company from 1977 to 1989 followed by a building materials manufacturer until 2001.		
<b>Current Land Use / Site Conditions:</b> This site is currently underutilized, with the trucking company still operating on an 11.8-acre portion of the site. Operations include loading, fueling, and repair. Two metal structures (10,000 sq ft; 4,000 sq ft) are		

<sup>1</sup> US EPA – Cleanups in My Community ([Cleanups in My Community | US EPA](https://www.epa.gov/cleanups-in-my-community))

<sup>2</sup> US EPA My Environment Tool (<http://enviro.epa.gov/myenvironment/>)



**PAL: Play. Advocate. Live Well.**  
**FY2026 US EPA Brownfields Community-wide Assessment Grant**

located on site. The remaining 48.96 acres are wooded and undeveloped. **The site is located adjacent to the South Pacolet River and in a federally designated flood plain.** Portions of the site along the river are frequented by local children for swimming and fishing. The site is located adjacent to the future SGT.

Environmental Concerns: Potential contaminants of concern include petroleum products from on-site fueling and repair operations, and volatile organic compounds (VOCs), semi-volatile organic compounds (SVOCs), pesticides, and herbicides associated with historic railway and chemical manufacturing operations. These contaminants pose a risk to the adjoining South Pacolet River, SGT patrons, and those currently accessing the river.

Reuse/Redevelopment Plans: Plans are to redevelop the site into the **Campobello Nature Preserve** which will serve as a trail head to the SGT, preserve valuable greenspace, and provide outdoor recreational opportunities. The City of Campobello is currently working with the on-site trucking company to develop a relocation strategy.

<b>Lumber Yard Site</b>	Acreage: 4.5 acres	Location: 2-8 S Main St, 18-20 S Howard St, & 3-5 Bomar St, Inman, SC
<u>Past Land Use:</u> This site, which adjoins the Saluda Grade Rail Line, was historically occupied by an agricultural chemical company, lumber company, and other manufacturing facilities dating to pre-1955.		
<u>Current Land Use / Site Conditions:</u> There are currently no on-site operations. Two metal structures (13,000 sq ft; 3,000 sq ft) are currently located on site. The site is located directly adjacent to the future SGT and occupies the northern stretch of Main Street in downtown Inman.		
<u>Environmental Concerns:</u> Potential contaminants include petroleum products, creosote, VOCs, SVOCs, metals, pesticides, and herbicides associated with historical lumber yard operations including treatment of wood products. These contaminants pose a risk to visitors to downtown Inman and future SGT patrons.		
<u>Reuse/Redevelopment Plans:</u> The Town of Inman Comprehensive Plan has identified this site as a priority redevelopment site in the Downtown Trail Development Area due to its location between downtown Inman and residential areas with plans to redevelop the site into a mixed-use retail/residential development with a trailhead and direct trail access for residents. Redevelopment of this site has been prioritized as <i>the</i> catalyst for redevelopment in downtown Inman.		

1.c. Identifying Additional Sites – In addition to the priority sites, PAL and our local government partners have completed an initial brownfield inventory of the geographic area that identified over 25 additional sites located within the target areas, accounting for over 250-acres of brownfields. Additional sites have been identified in the larger geographic area. PAL will continue to work with local, regional, and state partners to identify additional sites. To prioritize sites, PAL will coordinate with the Brownfields Steering Committee (local government partners, community groups, business owners, and other stakeholders) to develop and utilize a ranking process involving several factors for consideration, including redevelopment potential, community and economic impact, degree of potential contamination, community input, **impact on disproportionately impacted communities**, and alignment with local priorities. Site rankings will be reviewed and sites will be prioritized for assessment by the Brownfield Steering Committee.

**Revitalization of the Target Area;** 1.d. Reuse Strategy and Alignment with Revitalization Plans – *Revisiting the Saluda Grade: Connecting Economies in Spartanburg County* is PAL’s plan which will guide this grant project. The plan draws upon goals and visions established by **extensive community outreach and input** (community meetings, surveys, charettes, etc.) and various plans/studies such as the *Spartanburg County Tourism Action Plan & Feasibility Study*, the *Spartanburg County Saluda Grade Trail Project Economic Impact Study*, Clemson University’s *Estimated Impact of the Saluda Grade Trail*, the *Saluda Grade Trail Feasibility Study*, and local Comprehensive Plans (Campobello, Inman, and Landrum). These plans share the same general community priorities, which form the pillars for PAL’s brownfields redevelopment efforts: 1) **Stimulating public and private investment in local economies**, 2) **Increasing recreational tourism opportunities**, 3) **Providing increased transportation options**, and 4) **Encouraging connections to communities and natural and cultural resources**. PAL realizes that assessment, remediation, and redevelopment of brownfields sites along the Saluda Grade Corridor are critical to successfully constructing the Saluda Grade Trail and achieving these goals. Previously developed plans have focused on the development of the SGT and impacts directly associated with the trail; therefore, PAL will develop a **Brownfields Revitalization Plan** that will specifically focuses on brownfields redevelopment along the SGT. This plan will establish a solid foundation for PAL to become a champion of brownfields redevelopment in their region and will ensure that reuse strategies continue to clearly align with and advance revitalization plans and community priorities.

Plans are to redevelop the **Depot Street Site** into the **Campobello Nature Preserve**, serving as a trail head



**FY2026 US EPA Brownfields Community-wide Assessment Grant**

to the adjoining Saluda Grade Trail, providing amenities such as picnic shelters, a food truck area, and parking. Stream restoration of the adjoining South Pacolet River will return the stream to a more natural state and provide safe river access and preserve valuable greenspace. The City is working with the current tenants, who own an 11.8-acre portion of the site, to relocate to a nearby site. Should this funding be secured, relocation of the tenants will be prioritized to ensure that no further potential contamination may result from their on-site operations. The 4.5-acre **Lumber Yard Site** is considered *the* central property in downtown Inman. The site, located on an island of land adjacent to the Saluda Grade Trail between downtown Inman and a large residential area, was identified in the *Inman Comprehensive Plan* as a priority for redevelopment, indicating that this site will serve as the catalyst for growth in Inman. Plans to redevelop the site into a mixed-use retail/residential development with affordable housing, restaurant and retail space, a trailhead, trail parking, trailside amenities, and direct trail access align with community priorities in previous plans. Additionally, the City owns several adjoining properties and is currently constructing a new City Hall across from this site and is emphasizing redevelopment of this site and surrounding properties to serve as the cornerstone of revitalization efforts in Inman. The planned reuse for both priority brownfield sites aligns with community priorities of pursuing projects that: 1) **Stimulate public and private investment in local economies**, 2) **Increase recreational tourism opportunities**, 3) **Provide increased transportation options**, and 4) **Encourage connections to communities and natural and cultural resources**. Future redevelopment would have significant economic/health benefits to the local communities.

*1.e. Outcomes and Benefits of Reuse Strategy* – The proposed project will advance the community-driven vision outlined in *Revisioning the Saluda Grade: Connecting Economies in Spartanburg County* by positioning brownfield cleanup and revitalization as key drivers of local investment, recreational tourism, transportation access, and community connectivity in these rural communities. According to *Estimated Economic Impact of the Saluda Grade Trail*, a 2024 Clemson University study, visitor spending associated with the SGT **will generate up to \$266.6 million in total sales for the local economy, including the target areas, and create 130 new jobs** in its first ten years. By preparing priority brownfields sites along the SGT for reuse, **PAL can capitalize on the momentum of the SGT project and utilize brownfields redevelopment to further stimulate public and private investment, support trail-oriented development, and strengthen links between communities in the target areas.**

Redevelopment of the **Depot Street Site** into the **Campobello Nature Preserve** will create a signature trailhead and river-access hub that **attracts visitors, supports local businesses, and expands recreational opportunities**. Planned amenities - picnic shelters, a food truck area, parking, and restored riverfront access - will transform this parcel into a vibrant community asset that **enhances tourism, increases transportation options through direct trail access, and reinforces connections to natural resources**. Similarly, cleanup and redevelopment of the **Lumber Yard Site** will **catalyze economic growth** in Inman. The proposed mixed-use development, paired with trailhead facilities and trail-facing amenities, will **attract new businesses and residents while strengthening walkability and multimodal access**. With the City investing heavily in nearby public facilities, the site will serve as a cornerstone for Inman’s broader revitalization efforts and directly advance all four project goals identified in Criteria 1d.

Proposed reuse plans would improve community resilience to extreme weather by integrating sustainable site design and nature-based solutions. Stream restoration at the **Campobello Nature Preserve** will enhance stormwater management, stabilize riverbanks, and reduce flood risks, while both sites will incorporate low-impact development practices that better withstand heavy rainfall. Where feasible, redevelopment will incorporate renewable energy and energy-efficient measures, including opportunities for rooftop solar, efficient building systems, and low-energy trailhead infrastructure. These components reinforce the project’s goals by supporting sustainable, connected, and economically vibrant redevelopment across the SGT Corridor.

**Strategy for Leveraging Resources; 1.f. Resources Needed for Site Reuse** – A variety of state/federal funding sources are available to PAL, local government partners, and private stakeholders to further assess, cleanup, and redevelop priority sites and additional brownfields sites. The *Saluda Grade Trail Feasibility Study* identified **over \$50 million in additional grants** available to support PAL’s brownfields efforts. PAL and our



**FY2026 US EPA Brownfields Community-wide Assessment Grant**

partners have leveraged over \$21 million in state/federal funding for: property acquisition (\$15MM appropriation from state of SC); due diligence of the former rail line, development of a community engagement strategic plan, and an economic development/marketing plan (\$450k Appalachian Regional Commission grant); and trail/amenity planning and design (\$6MM HUD Community Development Fund appropriated by Senator Lindsey Graham). An extensive list of funding sources available to support the completion of assessment and subsequent cleanup and reuse strategies of brownfields sites in the SGT Corridor is available in the feasibility study, including:

<b>Funding</b>	<b>Description</b>	<b>Proposed Use</b>
US EPA Brownfields Cleanup Grant (federal) (up to \$4 million)	Funds the cleanup and remediation of brownfields sites.	Cleanup / remediation of brownfields sites identified along the SGT.
SC Brownfields Revolving Loan Fund (federal/state)	Funds the cleanup and remediation of brownfields sites.	Cleanup / remediation of brownfields sites identified along the SGT.
SCDES Brownfields Voluntary Cleanup Program (state)	Encourages private development of brownfields sites through tax incentives.	Cleanup / remediation of brownfields sites identified along the SGT.
USDOT RAISE Grant (federal) (up to \$5 million)	Funds projects for active transportation infrastructure in urban and rural areas.	Construction of SGT and amenities.
USDOT ATIIP Grant (federal) (up to \$14 million)	Supports the development of walking/biking infrastructure.	Design and construction of SGT.
SCPRT PARD Fund (state) (No set minimum/maximum)	Funds public recreation facilities.	Reuse development of Campobello Nature Preserve.
USDOT Carbon Reduction Program (federal) (\$100k minimum)	Funds projects designed to reduce transportation emissions from on-road sources.	Design of SGT and amenities.
SC Transportation Infrastructure Bank RPP (state) (\$30 million)	Funds projects that enhance mobility, promote economic development, or increase quality of life.	Construction of SGT and reuse development.
HUD Community Development Block Grant (federal) (up to \$100k)	Supports community development activities aimed at improving the quality of life from low- and moderate-income individuals.	Reuse of brownfields sites including the Campobello Nature Preserve.

**1.g. Use of Existing Infrastructure** – Redevelopment will capitalize on existing infrastructure, including roadway networks, water and sewer utilities, and electrical service at the priority sites. The existing infrastructure at the priority sites is sufficient for redevelopment. As additional upgrades or extensions are identified, PAL and its partners have identified a range of funding sources to support these improvements. For redevelopment led by private entities, PAL and its partners will collaborate with developers to coordinate and facilitate any required infrastructure enhancements. A critical infrastructure component for revitalization within the target area is the SGT. PAL and its partners have secured more than \$21 million in federal/state funding for acquisition, design, and planning of the SGT, and have identified an additional \$50 million in potential funding to support full trail construction and associated amenities. This investment will serve as a foundational catalyst for redevelopment in the target areas.

**2. Community Need and Community Engagement; Community Need; 2.a. The Community's Need for Funding** – The target area cities have **small, low-income populations; Inman: 3,085, Campobello: 888, Landrum: 2,564**. In the target areas, per capita income ranges from \$29,358 to \$34,662, much lower than state (\$37,993) and national (\$43,289) figures, and **poverty rates as high as 24.1%**, far exceed state (14.2%) and national (12.4%) rates, indicating a desperate need for investment in these communities to enhance quality of life for residents.<sup>3</sup> Spartanburg County also shows signs of an aging population no longer working with **85.5% of those 65 and older not participating in the workforce**, compared to 81% nationally.<sup>4</sup> These economic indicators demonstrate a high need in a community with limited financial resources and local capacity to fund environmental assessments or redevelopment without external assistance. The area’s small population density and rural character further limit access to the investment needed to catalyze growth. PAL, a small non-profit organization, relies heavily on grant funding to support our programs and initiatives; therefore, this grant is essential to initiate assessment and planning to carry out remediation and subsequent reuse of brownfield sites in the target area that can have the potential to stimulate public and private investment, increase recreational tourism, expand transportation options, and connect communities to natural and cultural resources.

<sup>3</sup> US Census: 2019-2023 American Community Survey

**FY2026 US EPA Brownfields Community-wide Assessment Grant**

**2.b. Health or Welfare of Sensitive Populations** – The sensitive populations within the target areas include **children, elderly, and low-income residents** (see table below). These sensitive populations are more susceptible to environmental contaminants, including those associated with the priority brownfields sites. The priority sites are in or adjacent to residential and recreational areas and are unsecured, creating an environmental exposure risk through potential contamination of soil, surface and groundwater, and hazardous building materials (asbestos/lead-paint).

Demographics <sup>3</sup>	CT - 225	CT - 226	CT - 229.01	CT - 229.02	County	State	National
Population under 18 years	25.4%	21.3%	18.9%	20.7%	23.4%	21.6%	22.2%
Population over 62 years	26.6%	29.6%	22.1%	22.6%	19.8%	22.6%	20.6%
Population below poverty level	19.6%	24.1%	12.4%	19.7%	14.5%	14.2%	12.4%
Median Income	\$62,031	\$40,762	\$70,714	\$49,388	\$64,195	\$66,818	\$75,538

\*Shaded cells indicate exceedances of state and/or national figures.

**The health of sensitive populations within the target area has been significantly impacted by persistently high poverty and low incomes**, contributing to higher-than-normal cases of alcoholism, drug use, and mental illness.<sup>5</sup> Redevelopment of the priority sites and other brownfields in the target areas will encourage investment and job creation in these communities and as a result, **will directly help alleviate mental health concerns attributed to poor economic conditions by providing more jobs, increasing incomes and providing more opportunities for economic mobility**. The target areas also have a higher than national average for each of the three predictors of chronic disease: Smoking (18% county; 15% US); Obesity (35% county; 34% US); and Physical Inactivity (25% county; 23% US)<sup>4</sup>, all of which **disproportionately impact the health of sensitive populations** particularly those faced with poor socioeconomic conditions. **Creating outdoor recreation opportunities such as the proposed Campobello Nature Preserve and increasing access to exercise opportunities such as the Saluda Grade Trail (Lumber Yard Site)**, will encourage greater physical activity, helping to alleviate health issues associated with physical inactivity and obesity.

**2.c. Greater Than Normal Incidence of Disease and Adverse Health Conditions** – Vacant and dilapidated industrial, commercial, and agricultural facilities, including the priority sites, historically utilized harmful substances such as petroleum products, solvents, VOCs, SVOCs, herbicides, and pesticides. Contaminants exposed to soil and groundwater as a result of these operations pose a risk to community health if left unaddressed. Vacant and dilapidated structures on brownfields, such as the Depot Street Site and Lumber Yard Site, pose a risk of asbestos and lead exposure and legacy soil and groundwater contamination from brownfields in the target areas has contributed to much higher-than-normal incidences of disease and health conditions. **Spartanburg County, where the target areas and geographic area are located, has the fourth highest reported incident rate for childhood cancer in South Carolina**, and exceeds state/national incidence rates for Liver & Bile Duct, Lung & Bronchus, Melanoma, Prostate, Stomach, and All Cancers.<sup>5</sup> The infant mortality rate in Spartanburg County is 5.2 per 1,000 babies born (19<sup>th</sup> highest of 46 SC counties) with leading causes due to short gestation (16.4%) and congenital malformations (13.4%).<sup>6</sup>

Health Data (CDC) <sup>7</sup>	CT - 225	CT - 226	CT - 229.01	CT - 229.02	County	National
High Blood Pressure	43.2%	44.8%	39.6%	42%	38.2%	34.4%
Cancer	10.7%	10.9%	7.7%	9.4%	8.0%	7.9%
Asthma	9.6%	10.1%	10.2%	10.2%	9.7%	9.8%
Heart Disease	8.8%	9.4%	6.9%	8.2%	6.5%	6.4%
Diabetes	15.9%	16.9%	14.9%	15.6%	13.5%	12.0%
Depression	25.4%	25.5%	24.9%	25.2%	24.1%	20.2%
Obesity	38.3%	39.0%	38.5%	38.5%	37.9%	32.8%

\*Shaded cells indicate exceedances of state and/or national figures.

Data obtained from the CDC reveals consistent health burdens in the target areas, with **residents experiencing elevated rates of chronic conditions compared to county and national benchmarks**. High blood pressure (39.6-44.8% target areas vs 38.2% county), diabetes (14.9-16.9% target areas vs 13.5% county), and

<sup>4</sup> 2024 Spartanburg County Community Health Needs Assessment

<sup>5</sup> National Cancer Institute - <https://statecancerprofiles.cancer.gov/index.html>

<sup>6</sup> SC Department of Public Health – Infant Mortality and Selected Birth Characteristics – November 2025

<sup>7</sup> CDC – PLACES: Local Data for Better Health - [PLACES: Local Data for Better Health | PLACES | CDC](https://places.cdc.gov/)

## **FY2026 US EPA Brownfields Community-wide Assessment Grant**

obesity (38.3-39.0% target areas vs 37.9% county) all exceed regional averages. These health conditions show disparity, with heart disease rates up to 3.4% above county norms. Respiratory impacts appear in persistent asthma rates (9.6-10.2% target areas) that surpass county (9.7%) and national (9.8%) averages. Cancer rates raise particular concern given brownfields' historical associations with carcinogens like PAHs and VOCs. Elevated asthma rates align with potential airborne particulate exposure from disturbed contaminated sites. While multifactorial in origin, these patterns warrant investigation of legacy pollutants that may contribute to respiratory sensitization and chronic disease burdens through soil, water, or air pathways. **Utilizing funding awarded through an EPA Community-wide Assessment grant, proactive brownfield assessment would directly address threats by identifying contaminant sources and exposure pathways and implementing controls to reduce community health risks.**

Strategic redevelopment of priority sites like the Lumber Yard Site and Campobello Nature Preserve creates dual benefits: 1) Elimination of exposure risks through contaminant removal/capping, and 2) Creation of health-promoting infrastructure. These projects could directly combat the area's high physical inactivity rates (29.0-31.5% vs 27.4% county) by providing safe exercise venues, while green space expansion may help reduce depression rates (24.9-25.5%) through improved air quality and nature access. Such transformations exemplify how brownfield renewal can simultaneously mitigate environmental hazards and address the chronic health disparities documented in CDC data.

**2.d. Economically Impoverished/Disproportionately Impacted Populations** – This EPA Brownfields Assessment grant and proposed reuse strategies would address critical environmental and public health challenges in the target areas. Agricultural, industrial, and commercial operations have had a disproportionate impact on the target areas, especially for a rural area, as evidenced by the presence of two Superfund sites, two Resource Conservation and Recovery Act (RCRA) sites, two US EPA Release Response site, 42 active and nearly 150 inactive UST sites, six toxic releases to the air, and nine toxic releases to the land.<sup>8,9</sup> By systematically identifying legacy contaminants from decades of agricultural and industrial activity, brownfields efforts will focus on vulnerable populations - including neighborhoods with up to 87.3% of households below the quality of life threshold income (CT-226) and elderly residents comprising nearly 30% of CT-226's population.<sup>10</sup> This targeted action is particularly essential for children, as 25.4% of CT-225's residents are under 18 compared to 23.4% countywide,<sup>9</sup> coupled with the county's "Very Low" childhood opportunity rating.<sup>11</sup> The assessment phase prioritizes high-risk sites like the Lumber Yard site, where contamination discourages investment in communities already experiencing up to a 10% business vacancy rate (70<sup>th</sup> percentile).<sup>12</sup> **Transforming priority sites into community assets utilizing EPA Assessment Grant funding directly addresses intersecting health and economic crises.** Converting the Lumber Yard into a mixed-use development with a trailhead for the SGT would combat CT-229.02's 31.5% physical inactivity rate<sup>11</sup> and reduce harmful air emissions by providing alternative transportation options in a community **above the 60<sup>th</sup> percentile for both respiratory risk and cancer risk due to cumulative air toxics** while eliminating exposure pathways near low-income households (median income \$49,388 vs \$64,195 county)<sup>10</sup>. Simultaneously, developing the Campobello Nature Preserve creates dual benefits: remediating degraded lands and providing nature-based mental health interventions for a population with depression rates 4% above national averages<sup>10</sup>. These projects strategically counter systemic disadvantages - the preserve's educational programs would help address cycles of poverty for the 5.8% of county children experiencing homelessness<sup>11</sup>, while trail infrastructure could attract tourism dollars to tracts with median incomes as low as \$40,762<sup>10</sup>.

This integrated approach tackles root causes of persistent issues through environmental action. Involving residents in redevelopment planning helps counter historical challenges reflected in the dire economic conditions of the target areas. Redevelopment of remediated brownfields would create living-wage jobs in communities where 19.7% live in poverty<sup>9</sup>, directly addressing the area's higher-than-state-average child homelessness. Ultimately, transforming brownfields into health-promoting assets aligns with community priorities

<sup>8</sup> US EPA – Cleanups in My Community ([Cleanups in My Community | US EPA](https://www.epa.gov/cleanups-in-my-community))

<sup>9</sup> US EPA My Environment Tool (<http://enviro.epa.gov/myenvironment/>)

<sup>10</sup> US Census: 2019-2023 American Community Survey

<sup>11</sup> 2024 Spartanburg County Community Health Needs Assessment

<sup>12</sup> US EPA EnviroAtlas (<https://enviroatlas.epa.gov>)



**FY2026 US EPA Brownfields Community-wide Assessment Grant**

while stimulating economic mobility - improved environmental conditions may attract employers to areas burdened by 12.4-24.1% poverty rates<sup>9</sup>, creating sustainable pathways for community revitalization that protect public health and create economic opportunities.

**Community Engagement; 2.e. Project Involvement & 2.f. Project Roles** – The following organizations have been involved with the development of the SGT project and will continue to provide assistance and support for the brownfields grant project.

Organization	Organizations Mission	Point of Contact	Specific Role
Spartanburg County Foundation	<b>Community-based organization</b> working to improve the lives of all Spartanburg County residents by promoting philanthropy, encouraging community engagement, and responding to community needs.	Troy Hanna thanna@spcf.org	Serve as a <b>community liaison</b> representing residents affected directly by the project work, assisting with site selection and shaping of reuse concepts.
Town of Campobello	To preserve small-town character, foster a safe and welcoming community, and promote responsible growth that enhances the quality of life for all residents.	Alician Sprouse asprouse@townofcampobello.com	Assist with site selection and reuse planning for brownfields sites.
City of Inman	To provide outstanding public services to improve quality of life in our community.	Joe Lanahan jlanahan@cityofinman.org	Serve on the Steering Committee and <b>host meetings</b> . Assist with site selection and reuse planning for brownfields sites.
City of Landrum	To deliver quality public services, support responsible development, and a safe, hospitable environment.	Shannon Baldwin shannon.baldwin@cityoflandrum.com	Serve on the Steering Committee and <b>host meetings</b> . Assist with site selection and reuse planning for brownfields sites.
One Spartanburg	To build a vibrant Spartanburg through business, economic, and tourism development.	Billy Dunlap bdunlap@onespartanburginc.com	Assist with <b>business recruitment</b> , shaping reuse concepts, and serving as <b>economic/tourism development advisor</b> .
Spartanburg School District One	To provide a quality, student-centered education.	Jason McCraw jason.mccraw@spart1.org	Serve as liaison to <b>Disproportionately Impacted Communities</b> in the project area.

**2.g. Incorporating Community Input** – Since its founding, PAL has worked with local citizens, community leaders, stakeholders, and our project partners to develop the vision and plans that will be the SGT. The *Saluda Grade Trail Feasibility Study* completed in 2024 included extensive public, project partner, and key stakeholder engagement. Outreach efforts include stakeholder and community meetings, online public surveys, a monthly email newsletter, PAL’s website, social media, and public events. This multi-pronged approach to outreach has proven to effectively reach a diverse group of stakeholders. PAL plans to continue this level of engagement, incorporating brownfields into our already successful outreach efforts. PAL is currently developing a **Community Engagement Strategic Plan and Regional Economic Development and Marketing Plan** utilizing Appalachian Regional Commission grant funding which is scheduled for completion in early 2026. PAL will utilize components of this plan to develop a Community Involvement Plan (CIP) for this project that will guide brownfield outreach efforts and communicate project progress to residents directly affected by the project work and involved organizations and partners. Community meetings (**with an online option for those that cannot attend in person**) specific to PAL’s brownfields project will be held twice a year throughout the life of the grant program at locations in communities directly affected by project work. Community input on site prioritization, cleanup plans, and site reuse will be solicited through surveys, social media, and at community meetings. Input will be considered during monthly Brownfields Steering Committee meetings and responses will be delivered at subsequent events, in newsletters, and through social media.

**3. Task Descriptions, Cost Estimates, & Measuring Progress; Description of Tasks/Activities & Outputs;**

3.a. Project Implementation, 3.b. Anticipated Project Schedule, 3.c. Task/Activity Lead, 3.d. Outputs

Task 1: Programmatic Activities
<b>a. Project Implementation:</b> EPA funded tasks: 1) Quarterly, Annual, and Final Reporting; 2) Progress and Financial tracking and ACRES database entries; 3) Monthly progress updates and meetings; 4) Procurement of Qualified Environmental Professional (QEP); 5) Travel to national/regional Brownfields conferences/workshops



**FY2026 US EPA Brownfields Community-wide Assessment Grant**

<p><b>b. Anticipated Project Schedule:</b> 1) Quarterly reporting begins in Q1 and continues throughout grant; Annual reporting in Q5, Q9, Q13, and grant closeout; 2) Progress and Financial tracking and ACRES entries begin in Q1 and continue throughout grant; 3) Monthly progress updates and meetings being in Q1 and continue throughout grant; 4) QEP will be procured in Q1; 5) Conference/workshop attendance in Year 1 and Year 3</p>
<p><b>c. Task/Activity Lead:</b> Leigh MacDonald, Brownfields Project Director with assistance from QEP</p>
<p><b>d. Outputs:</b> 16 quarterly reports, 4 annual financial reports, 4 MBE/WBE forms, ACRES database reporting, 48 monthly meetings/calls. Contract with QEP, Two staff to attend two conferences</p>
<p><b>Task 2: Community Outreach</b></p>
<p><b>a. Project Implementation:</b> EPA funded tasks: 1) Development of CIP; 2) Newsletters, Surveys, Social media/website updates, and other outreach material; 3) Community Meetings; 4) Brownfields Steering Committee (BSC) creations and meetings</p>
<p><b>b. Anticipated Project Schedule:</b> 1) CIP developed in Q1 and updated as needed; 2) Monthly newsletter, surveys, and social media/website updates begin in Q1 and continue throughout grant; 3) Community Meetings held in Q1, Q3, Q5, Q7, Q9, Q12, Q15; 4) BSC created in Q1 with quarterly meetings/calls (more as needed)</p>
<p><b>c. Task/Activity Lead:</b> Leigh MacDonald, Brownfields Project Director</p>
<p><b>d. Outputs:</b> 1 CIP, Newsletters, surveys, social media posts, website updates, 7 community meetings with summary reported quarterly, 16 BSC meetings</p>
<p><b>Task 3: Site Inventory / Assessment</b></p>
<p><b>a. Project Implementation:</b> EPA funded tasks: 1) Brownfields Site Inventory; 2) Generic Quality Assurance Project Plan (QAPP); 3) Phase I Environmental Site Assessments (ESAs), Phase II ESAs with Site Specific QAPPs (SSQAPPs) and Health and Safety Plans (HASPs), and additional eligible assessments (Asbestos Survey, Lead Paint Survey, etc.)</p>
<p><b>b. Anticipated Project Schedule:</b> 1) Site inventory begins in Q1 and continues throughout grant as needed; 2) Generic QAPP completed in Q2; 3) Assessment activities will begin in Q2 and continue throughout grant</p>
<p><b>c. Task/Activity Lead:</b> QEP with direction from PAL (Leigh MacDonald, Brownfields Project Director)</p>
<p><b>d. Outputs:</b> 1 GIS/web-based Brownfields Site Inventory, 1 Generic QAPP, 15 Phase I ESAs, 6 SSQAPPs and HASPs, 6 Phase II ESAs or equivalent assessments (Asbestos Survey, Lead Paint Survey, etc.)</p>
<p><b>Task 4: Cleanup / Reuse Planning</b></p>
<p><b>a. Project Implementation:</b> EPA funded tasks: 1) ABCAs, 2) Visioning Sessions/Charettes, 3) Brownfields Revitalization Plan, 4) Site Reuse Plans, and 5) Land Use Assessments</p>
<p><b>b. Anticipated Project Schedule:</b> Activities under this task will begin in Q6 and continue throughout grant</p>
<p><b>c. Task/Activity Lead:</b> QEP with direction from PAL (Leigh MacDonald, Brownfields Project Director)</p>
<p><b>d. Outputs:</b> 4 ABCAs, 2 Visioning Sessions, 1 Revitalization Plan, 2 Site Reuse Plans, 1 Land Use Assessments</p>

**3.e. Cost Estimates** – Cost estimates were developed based on local market rates. The budget includes personnel, fringe benefits, travel, contractual, and indirect administrative costs. Fringe benefits were calculated at 20% of personnel costs. **Of the total budget, site specific work accounts for 47.7% and eligible reuse/area-wide planning activities account for 30.3%.**

**Task 1: Programmatic Activities**– Personnel: ACRES, Quarterly, Annual Financial, MBE/WBE, and Closeout Reporting and day-to-day program management for 4 year grant period \$10,800 (240hrs x \$45); Fringe Benefits: \$2,160 (20% personnel costs); Travel: Two staff to attend two conferences \$5,000 (Per trip - Flight: \$800; Hotel – 3 nights: \$1,200; Incidentals and per diem: \$500; total: \$2,500x2); Contractual: ACRES, Quarterly, Annual Financial, MBE/WBE, and Closeout Reporting support \$20,000 (100hrs x \$200); Other: Conference registration for two conferences: \$1000 (\$500 ea x 2 conferences)

**Task 2: Community Outreach**– Personnel: Community and BSC meetings, social media/website updates, newsletters, etc. \$12,600 (280hrs x \$45); Fringe Benefits: \$2,520 (20% personnel costs); Contractual: Development of CIP \$3,000 (20hrs x \$150); Quarterly BSC meetings \$1,600 (0.5hrs x 16 meetings x \$200); 7 Community meetings/events \$14,700 (10.5hrs x 7 meetings x \$200).

**Task 3: Site Inventory/Assessment**– Personnel: Task management and review \$4,500 (100hrs x \$45); Fringe Benefits: \$900 (20% personnel costs); Contractual: Develop Site Inventory and Ranking Tool \$17,000 (85hrs x \$200); 15 Phase I ESAs \$52,500 (avg. \$3,500 ea x15); 1 Generic QAPP \$4,500; 6 Phase II ESAs (or equivalent) including SSQAPP/HASP \$162,000 (avg \$27,000 ea x6).

**Task 4: Cleanup/Reuse Planning**– Personnel: Task management, review, facilitation of activities \$10,800 (240hrs x \$45); Fringe Benefits: \$2,160 (20% personnel costs); Contractual: 4 ABCAs \$24,000 (avg \$6,000 ea x4); 2 Visioning Sessions \$13,000 (\$6,500 ea) x2; 1 Brownfields Revitalization Plan \$50,000; 2 Site Reuse



**FY2026 US EPA Brownfields Community-wide Assessment Grant**

Plans \$56,000 (\$28,000 ea x2); 1 Land Use Assessment \$8,284.

**Administrative Costs**– \$20,976 (Indirect Costs; overhead and operating costs); Calculated at 40% of total non-contractual costs (\$52,440); **4.2% of total grant funds requested.**

	Task 1: Programmatic Activities	Task 2: Community Outreach	Task 3: Site Inventory / Assessment	Task 4: Cleanup/Reuse Planning	Administrative Costs	<b>Total</b>
Personnel	\$10,800	\$12,600	\$4,500	\$10,800		\$38,700
Fringe Benefits	\$2,160	\$2,520	\$900	\$2,160		\$7,740
Travel	\$5,000					\$5,000
Contractual	\$20,000	\$19,300	\$236,000	\$151,284		\$426,584
Other	\$1,000					\$1,000
<b>Total Direct Costs</b>	\$38,960	\$34,420	\$241,400	\$164,244		<b>\$479,024</b>
<b>Indirect Costs</b>					\$20,976	<b>\$20,976</b>
<b>Total Budget</b>	\$38,960	\$34,420	\$241,400	\$164,244	\$20,976	<b>\$500,000</b>

**3.f. Plan to Measure and Evaluate Environmental Progress and Results** – To ensure outputs, results, and outcomes are reasonable, appropriate, and clearly correlate with information provided in the grant narrative and workplan, each will be tracked, measured, and evaluated **weekly** by the project team through a shared database allowing for real time review and updates throughout the project. This will ensure sufficient progress is being made, and the project is on schedule. The information will be used to develop a monthly summary report shared with the Brownfields Steering Committee (BSC) to be reviewed during **monthly project team and quarterly BSC meetings**. These reports will be used to develop **quarterly reports for submittal through EPA’s ACRES database**. At the completion of each assessment activity, a summary report will be provided to the project team and ACRES will be updated. Outputs tracked are defined in Section 3.a.d and include the number of Phase I/II’s, QAPPs and other assessments completed, number of ABCAs, revitalization plans, and other cleanup/reuse plans completed, and number of community meetings held. Anticipated outcomes (reported quarterly at minimum) include additional funding leveraged, jobs created, public participation, and acres ready for reuse. PAL will make monthly project update calls with their EPA Project Officer, and if deviations arise, corrective actions will be developed.

**4. Programmatic Capability and Past Performance; Programmatic Capability**

**4.a. Organizational Capacity, 4.b. Organizational Structure, & 4.c. Description of Key Staff** – PAL is a 501(c)(3) nonprofit organization led by a 20-member board of directors that meets 10 times annually. Daily operations are handled by an 18-member staff led by Executive Director Laura Ringo. This project will be led by PAL’s Trails Development Director, **Leigh MacDonald (Brownfields Project Director)**. Leigh brings extensive experience in land use planning, development, and environmental management. She joined PAL in 2024 after serving as Deputy Director of Spartanburg County Planning & Development Department where she led strategic planning, land development reviews, and the use of GIS to support sustainable growth. She holds a BS in Environmental Technology and Management from NC State University. At PAL, Leigh integrates environmental sustainability into trail planning and development and, as lead contact for HUD’s grant award, was instrumental in securing \$6 million federal funds for the Saluda Grade Trail. Leigh will lead the project’s strategic direction, interagency coordination, QEP oversight, and community relations. **Leith McLeod (Brownfields Project Manager)** joined PAL as a contractor and transitioned to a full-time Trails Project Manager in 2024. With over 15 years of engineering experience, Leith manages the full project lifecycle, from planning and design to engineering and construction, across PAL’s trail network. He also leads the revitalization of PAL’s Downtown Bike Park, transforming a Brownfields site into a sustainable and vibrant community asset, showcasing PAL’s commitment to environmental redevelopment. He will be responsible for day-to-day project implementation and technical oversight. **Charlotte Verreault (Financial Manager)** brings more than two decades of high-level experience in corporate operations, procurement, and organizational development to her role as PAL’s Finance Manager. Prior to joining PAL, Charlotte held several leadership positions during her 20-year tenure at Milliken & Company. Her broad expertise spans financial systems, compliance, strategic planning, and data governance. At PAL, Charlotte oversees financial management for federally funded



**FY2026 US EPA Brownfields Community-wide Assessment Grant**

initiatives, including the SGT, where she leads drawdowns, disbursements, and reporting to ensure transparency and compliance with all grant requirements. Charlotte will be responsible for managing the finances and all drawdowns through ASAP.gov for this grant. **Nora Farrell (Compliance and Audit Manager)** brings over a decade of experience in grant management, public health, and nonprofit leadership. She holds a BS from Clemson University and a Master of Public Health from New York Medical College. Nora serves as PAL's Grants Manager where she is responsible for overseeing grant compliance, performance reporting, and audit preparedness, tasks that she will also oversee for this grant.

4.d. Acquiring Additional Resources – PAL has a well-established procurement process in place that is compliant with Federal Code 40 CFR 31.36. Using this process, PAL intends to procure a QEP in accordance with 2 CFR 200 to assist with technical and reporting requirements of this project. This process will be conducted in a fair, impartial, and transparent manner to obtain the highest level of expertise at the most reasonable cost. This same process will be utilized should other contract services be required. During the procurement process PAL will take into consideration factors promoting fair and strong labor practices and encourage local hiring and Minority and Women Owned Business Enterprise hiring.

**Past Performance and Accomplishments; 4.f. Has Not Received an EPA Brownfields Grant but has Received Other Federal or Non-Federal Assistance Agreements; 4.f.(1) Purpose and Accomplishments** – Over the last decade PAL's annual revenue has increased 375% thanks largely to public and private grants. Recently, PAL has been awarded, is implementing, and is managing approximately 20 grants for various projects and programs. Currently, PAL is the direct recipient of federal grants including a USDA Local Food Promotion Program grant (\$661k), USDA GusNip grant (\$60k), and HUD Community Projects Funds (\$6MM) grant. PAL is currently the recipient of a **\$6 million HUD Community Project Funds Grant** which will fund the development of the Saluda Grade Trail project, a 31.5-mile regional rail-trail that promotes health, connects communities, and supports local economic development. To date, PAL has completed key early milestones including land acquisition, environmental review, and broad community engagement. Future outcomes will include completed trail miles, trail usage, and measurable economic and health benefits. This grant and the proposed brownfields project support development of the Saluda Grade Trail and adjacent properties. Both projects include environmental assessment services, contractor procurement, community engagement, measurement of community impact, and federal reporting. PAL is also the recipient of a **\$661,000 USDA Local Food Promotion Program (LFPP) Grant** which is intended to expand PAL's Food Hub operations by building aggregation and distribution capacity, strengthening farmer markets, and improving consumer access to local food. To date, PAL has expanded its distribution network, increasing farmer sales, adding new institutional buyers, and improving food safety protocols. Outputs include the number of participating farmers, sales growth, and customer reach. Outcomes include increased farmer revenue and access to fresh foods in Spartanburg County. Both this grant and the proposed brownfields grant will improve health and welfare for communities in rural Spartanburg County. Both projects include community engagement, measurement of community impact, and federal reporting.

4.f.(2) Compliance with Grant Requirements – **HUD Community Projects Fund Grant:** PAL has remained in compliance with the project workplan, schedule, and HUD terms and conditions, adhering to required environmental reviews and procurement processes. Required reporting has been timely and acceptable as required by HUD. **USDA LFPP Grant:** PAL has remained in compliance with the LFPP workplan, schedule, and terms and conditions. Quarterly/annual reports have been submitted on time and accepted by USDA. Progress toward expected results—such as growth in Food Hub sales and increased farmer participation—has been documented regularly and communicated clearly to USDA. When required, PAL worked closely with the program officer to make and document necessary budget and narrative changes, ensuring adjustments aligned with program goals and requirements. When staffing transitions briefly delayed the food hub activities, PAL realigned duties and updated the narrative. These measures were effective and accepted by USDA.



**PAL: Play. Advocate. Live Well.  
FY26 Brownfields Community-Wide  
Assessment Grant  
Threshold Criteria**



**PAL: Play. Advocate. Live Well.**  
**FY2026 US EPA Brownfields Community-wide Assessment Grant**

**Threshold Criteria**

**1. Applicant Eligibility**

- a. PAL: Play. Advocate. Live Well. (formerly Partners for Active Living), is eligible to apply for the EPA Brownfields Community-wide Assessment Grant as a non-profit organization described in section 501(c)(3) title 26 (the Internal Revenue Code (IRC)) and exempt from taxation under 501(a) of that title. (See attached documentation)
- b. PAL: Play. Advocate. Live Well., is **not exempt** from Federal taxation under section 501(c)(4) of the Internal Revenue Code.

**2. Community Involvement**

Since its founding, PAL has worked with local citizens, community leaders, stakeholders, and our project partners to develop the vision and plans that will be the Saluda Grade Trail. The *Saluda Grade Trail Feasibility Study* completed in 2024 included extensive public, project partner, and key stakeholder engagement. Outreach efforts include stakeholder and community meetings, online public surveys, a monthly email newsletter, PAL’s website, social media, and public events. This multi-pronged approach to outreach has proven to effectively reach a diverse group of stakeholders. PAL plans to continue this level of engagement, incorporating brownfields into our already successful outreach efforts. PAL is currently developing a *Community Engagement Strategic Plan and Regional Economic Development and Marketing Plan* utilizing Appalachian Regional Commission grant funding which is scheduled for completion in early 2026. PAL will utilize components of this plan to develop a Community Involvement Plan (CIP) for this project that will guide brownfield outreach efforts and communicate project progress to residents directly affected by the project work and involved organizations and partners. Community meetings (with an online option for those that cannot attend in person) specific to PAL’s brownfields project will be held twice a year throughout the life of the grant program at locations in communities directly affected by project work. Community input on site prioritization, cleanup plans, and site reuse will be solicited through surveys, social media, and at community meetings. Input will be considered during monthly Brownfields Steering Committee meetings and responses will be delivered at subsequent events, in newsletters, and through social media.

**3. Expenditure of Existing Grant Funds**

PAL: Play. Advocate. Live Well. affirms that they do not have an open EPA Brownfields Assessment or Multipurpose Grant.

**4. Contractors and Named Subrecipients**

Not Applicable.